

The image shows a highly ornate church interior. At the top, a circular medallion features a religious scene. Below it, the ceiling is decorated with intricate gold leaf scrollwork. The central focus is a large, golden organ case with a curved front and vertical pipes. The case is flanked by two tall, slender golden columns with decorative capitals. The walls are white with gold leaf accents, including large, ornate scrollwork panels. Below the organ case, a balcony with a white balustrade and gold-tipped balusters is visible. In the background, a wooden door or panel is partially seen.

James Berrow

The making of an English organ builder:  
**John Nicholson of Worcester**  
Online Supplementary Material

*Intentionally Blank*

**The making of an English organ builder:  
John Nicholson of Worcester, formation life and work**

***Online Supplementary Material***

**CONTENTS:**

**Section A – Notebooks:**

<b>Page</b>	
7	John Nicholson notebook, summary of contents.
20	John Nicholson Notebook (JN), an analysis of the major primary source.
33	John Nicholson notebook reproduced: sample building estimates; organ estimates; piecework Accounts (preceded by a key to reproductions on page 28).
113	Locations and wind pressures listed in SB2.

**Section B – Abstracts from the Sperling notebooks:**

3	1 – References to the organs of Richard Nicholson.
5	2 –References to the organs of John Nicholson of Worcester.
9	3 – References to some organs by other members of the Nicholson family.
15	4 –References to the organs of Worcestershire.

**Section C – Some pipe measurements and survey notes.**

3	Pipe measurements, method and presentation.
5	Some pipe measurements: <i>The Baptist Chapel, Pershore, Worcestershire.</i> <i>St John, Mount Bures, Suffolk.</i> <i>St Michael, Great Witley, Worcestershire.</i> <i>The organ formerly in Manchester Cathedral and Holy Trinity, Bolton, Lancashire.</i>
16	Survey note: <i>St Mary the Virgin, Whissonsett (18??). An extended version of the main textentry.</i>
21	Survey notes: <i>The organ formerly in the Baptist Chapel, Pershore, Worcestershire (1849).</i> <i>The organ now in St Botolph, Croxton Kerrial and formerly in Salem Baptist Chapel, Cheltenham (1849) and Barton Street Methodist Chapel, Gloucester (1884).</i> <i>St John, Mount Bures, Suffolk (184?).</i>
33	Survey note: <i>St John the Baptist, Fladbury, Worcestershire (1838). An extended version of the main text entry.</i>

**Section D – Indentures.**

4	Transcript of John Witney indenture (1860).
5	Transcript of Charles Wood indenture (1878).
6	Image of Charles Wood indenture (1878).

**Section E – Some off-prints of company published material, HL A to H.**

**Section F – Map**

Central Worcester showing Music Hall, New Street and Palace Yard premises.

*Intentionally Blank*

Section A

**Notebooks**

*Intentionally Blank*

The making of an English organ builder:  
John Nicholson of Worcester, formation life and work

**1 JN NOTEBOOK:**

The John Nicholson Notebook, deposited in the Worcestershire Archive and Archaeology Service (previously the Hereford and Worcester Record Office, St Helen's, Worcester). 850, St Andrew BA4426/30.

**THE JOHN NICHOLSON NOTEBOOK (JN): A SUMMARY OF CONTENTS<sup>i</sup>**

See A, JN Notebook 2 for a physical description and analysis of this source and A, JN Notebook 3 for relevant photographed pages. These are reproduced by permission of the Diocese of Worcester, Diocesan Registrar, Stuart C. Ness and photographed by John France, Senior Archival Photographer, Worcestershire Archive and Archaeology Service, The Hive, Sawmill Walk, The Butts, Worcester WR1 3PD; [www.explorethepast.co.uk](http://www.explorethepast.co.uk). My thanks to both.

**Summary presentation:**

Note that the Notebook page-headings, names of customers, locations and dates are direct quotations. From October 1858, Nicholson intermittently introduced his own organ and page numbering system in the top left-hand corner of the page, these are shown in brackets after the actual page number.

The full locations of the churches, with additional details, are given in Gazetteer 3.

**Contents summary by page reference:**

- 33) St. Swithen's<sup>ii</sup> Church, Worcester. 28 August 1843. Enlargement, II + 1½, new five-stop Swell, c<sup>0</sup>-f<sup>3</sup>, 15 Pedal pipes and couplers. See JN: 54.  
'1843 / Augt 18<sup>th</sup>. An Estimate for Enlarging and Improving the Organ of St Swithen's [*sic*] Church Worcester. / A new Swell on the Venetian plan Compass being from Tenor C to F in alto 42 keys

Stop	1 - Open Diapason
Do	2- Stop Diapason
Do	3 - Principal
Do	4- Flute
Do	5 - Hautboy

Couplet to Connect the Great Organ and Swell together – An Octave couplet to connect the Pedals and Great Organ together with an Octave and half of Pedals with fifteen Separate Pedal pipes on a large Scale / A new Set of Great Organ Keys with New Bellows with double action on a large Scale with Concussion valves to Steady the wind[.] Total number of new pipes 210

For the Sum of £80 0s 0d

John Nicholson

Worcester August 28<sup>th</sup> 1843

To the Rev<sup>d</sup>. R Sargeant Rector

Red Hill

The above will make your Organ a very complete and Effective Instrument

- 34) Newent Church, Glos. 22 September 1843. Enlargement, three-stop Swell f<sup>0</sup>-f<sup>3</sup> and coupler, with two stops prepared for.

35) Studley Church [near Alcester, Warws.]. 23 September 1843. New. II/10/2 + 1<sup>1/2</sup>, CC-(Great C, manual stops)-Swell c<sup>0</sup>-f<sup>3</sup> c. The organ to be ‘on the German Scale Compass of the Key Board from CCC to F[,] 66 Keys[,] the lower Octave to Act upon the Bourdon’. ‘With an Octave of Bourdon pipes to CCC an Octave and half of Pedals. Octave Couplet from Pedals to Great. Composition Pedals to Change the Stops...<sup>iii</sup> all to be of the best materials and Workmanship subject to any Competent person...’ £170 (PPSS £17.00).

36) St. Swithin’s Church, Worcester. iv 12 April 1844. Enlargement, a cheaper estimate. II + 1<sup>1/2</sup>, six-stop Swell c<sup>0</sup>-f<sup>3</sup>, couplers. No mention of Pedal pipes, see JN: 51, above. This work was carried out on the 1795 organ, (by William and Robert Gray), a simple, three tower case, which remains almost otherwise untouched.

‘An estimate for Enlarging and Improving the Organ of St Swithen’s [*sic*] Church Worcester. / A new Swell on the Venetian plan Compass being from F in Alto down to tenor C, 42 notes

Stop	1 - Open Diapason
	2- Bourdon
	3 - Stop Diapason
	4- Principal
	5 - Fifteenth or Wald Flute
	6- Hautboy

Couplet to Connect the Great Organ and Swell together at pleasure – with an Octave and half of German Pedals to take down the Keys of the Great Organ. New Bellows on a large Scale with Double Action Concussion valves to steady the wind for the

Sum of 66 Pounds

John Nicholson

April 12<sup>th</sup> 1844’.

37) Mr. Fowler, Kidderminster [Worcs.]. 26 April 1844. Estimate for a new ‘finger organ’. II/10+0, GG (no GG#)-Swell f<sup>0</sup>-f<sup>3</sup>.<sup>v</sup>

38) No heading, un-dated specification for an anonymous, small organ, no price. An option for JN: 55, above? II/7/1 (room on soundboards for two un-named stops)+0. c. ‘Couplet to connect the Great organ and Swell[.] Room on the Sound board for two Stops more[,] with Composition pedals’.

39) Winchcomb [*sic*, Glos.].<sup>vi</sup> 5 August 1844. New organ in the old case. I/9+1<sup>1/2</sup>.

40) Independent Chapel, Gloucester. 1 October 1844. For ‘enlarging and improving...’, see 61-2.

41) St. Paul’s Church, Wolverhampton [Staffs.].<sup>vii</sup> 3 October 1844, ‘I hereby agree to enlarge and improve the organ...’. New pedal soundboard and action (C in bass, no treble compass given) and some work on the Swell.

42) Mr. Bernard’s organ, Leamington [Warws.]. n.d. Rebuild, some old pipework. New five-stop soundboard. I/5+0 [?]. c.

42-3) Independent Chapel, Gloucester. 5 November 1844. Enlargement. I/9+1<sup>1/2</sup>, GG-f<sup>3</sup> (including GG#). c.

44) Mr. Woodward, Cheltenham [Glos.]. 1 February 1845. Supplying some pipes. Seven Dulciana pipes c<sup>0</sup>-g<sup>0</sup> [*sic*] ‘voiced’ and GG and AA Stop Diapason. Completion of compass, or supplied to another organ builder?



- 46) Revd Mr. J. Jebb, Chesterfield [Derbys.].<sup>viii</sup> October 1845. New. I/5+1<sup>1</sup>/<sub>2</sub>. GG-?.
- 46) Revd Hastings, Areley Kings, Stourport [Worcs.].<sup>ix</sup> October [1845?]. New. I/7+1<sup>1</sup>/<sub>2</sub>. s. GG-?.
- 47) Blank. A break of seven years.
- 48-9) Mr. E. Lechmere, Hanley Church [Worcs.].<sup>x</sup> 25 April 1853. New. II/12/3+2 (Great Flute 4' and Swell Trumpet prepared for), C-c<sup>1</sup>-f<sup>3</sup>. Swell Bourdon 'two last [*sic*] octaves on Pedals', presumably controlled by the separate Pedal Bourdon stop. 155 Guineas (PPSS £13.56). Extra for Trumpet 25 Guineas and for Flute 4' 10 Guineas. No case. The first instrument with a two-octave pedalboard. See also JN: 88.
- 50-1) C. Morris, North Malvern [Worcs.].<sup>xi</sup> 24 April 1853. New. II/12/2 (plus Great Flute 4', Great Trumpet and Swell Cornopean)+1<sup>1</sup>/<sub>2</sub>, C-f<sup>3</sup>. c.
- 52) Mr. Parr, Redditch [Worcs.]. June 1853. New. I/5+1<sup>1</sup>/<sub>2</sub>, GG-f<sup>3</sup>. c. s.

Note a five-year break in the entries.

- 53-4) (1.)<sup>xii</sup> Bromsgrove Church [Worcs.]. October 1858. New. III/26/3[?] (plus preparation for a Great Trumpet and Pedal reed), C-f<sup>1</sup>-g<sup>3</sup>. c.

Great:

Open Diapason Large  
 Open Diapason Small \*  
 Stop Diapason Bass  
 Clarabella Treble  
 Principal  
 Wald Flute  
 Twelfth  
 Fifteenth  
 Mixture III  
 Trumpet pf

Swell:

Bourdon Bass  
 Dulciana Double  
 Open Diapason  
 Stop Diapason  
 Principal  
 Flute  
 Piccolo \*  
 Doublette  
 Oboe  
 Cornopean

Choir:

Open Diapason 'Thro''  
 Dulciana c<sup>0</sup>  
 Viol di Gamba c<sup>0</sup>  
 Stop Bass  
 Stop Diapason Treble  
 Dulcet  
 Flute  
 Cremona

Pedal:

Open Diapason  
 Bourdon  
 'Preparation for Reed'  
  
 Great to Pedal  
 Swell to Pedal  
 Choir to Pedal

There were to be '3 Sforzandos [*sic*] Pedals for the Feet... For the Sum of £700 and the old organ.'<sup>xiii</sup>

- 55) (2 and 3.) G.A. Lohr, Leicester.<sup>xiv</sup> 22 October 1858. Two alternative new organs.<sup>xv</sup> The second, dated 16 November 1858.

(i) I/7+1<sup>1</sup>/<sub>2</sub>, C-g<sup>3</sup>. c. £120 (PPSS £17.14).

1. Bourdon one octave 16ft tone
2. Open Diapason or Viol di Gamba
3. Dulciana or Viol di Gamba
4. Stop Diapason Bass
5. ' ' Treble
6. Principal
7. Flute
8. Fifteenth

1<sup>1</sup>/<sub>2</sub> octaves of German Pedals[.] 3 composition Pedals[.] General Swell[.] handsome Gothic case (deal) French polished with Metal Front Pipes Gilded[.] The whole to be of the best materials for the sum of 30£ £120 [*sic.*]

(ii) I/5+2, C-c<sup>1</sup>-g<sup>3</sup>. s. £120 (PPSS £24).

1. Bourdon Bass 16ft tone
2. Double Diapason treble
3. Open Diapason Ten C
4. Stop Diapason Bass
5. ' ' Treble
6. Principal Bass
7. ' Treble
8. Hautboy tenor C

2 8ves of pedals General Swell. Front and side Blower, case stained oak or mahogany[.] Gilded front[.] Metal Pipes. pedals and Keys to slide in & out at pleasure £120[.] (PPSS £24.)

- 56) (4.) Charles Merryweather, Leicester.<sup>xvi</sup> 12th May 1858. New. II/15/2+2 (preparation for a Great Trumpet), C-c<sup>1</sup>-Swell c<sup>0</sup>-g<sup>3</sup>. c. Two prices shown £330 and, below, £220, perhaps a case variant.
- 57) (5.) Revd P. Freeman, Thorverton, Cullompton, Devon.<sup>xvii</sup> 3 November 1858. Two alternative estimates. (i) I/3+0, C-f<sup>3</sup>. c. £50 (PPSS £16.67, 8, 8/8, 4.) (ii) I/7+1<sup>1</sup>/<sub>2</sub>, C-g<sup>3</sup>. s. c. £120 (PPSS £17.14).
1. Bourdon 16ft one octave
  2. Open Diapason tenor C
  3. Viol di Gamba
  4. Stop Diapason Bass
  5. Treble
  6. Principal
  7. Fifteenth
  8. Oboe
- 58) (6.) H. Wale, Belvoir Street, Leicester.<sup>xviii</sup> 4 November 1858. New 'chamber organ'. Pricing details indicate that an order was placed. I/7+1<sup>1</sup>/<sub>2</sub>, C-g<sup>3</sup>. s. c. Manual Bourdon, one octave only and additional quotation for 'Extra German Pedals and Bourdon'. 'The Keys and Pedals to slide in and out at pleasure'.<sup>xix</sup>
- 59) (7.) J.J. Corbett, Rock House, Cinderford, Glos. 7 April 1858. New. I/7/1+2, C-c<sup>1</sup>-g<sup>3</sup>. s. c. 'Coupler[, ] manuals to Pedals at Pleasure'. £130 (PPSS £18.57).
- 60) (8.) Mitton Church organ [Worcs.]. 'completed about 20th of Sept. 1858.' Alterations and additions.

[I?]+1<sup>1</sup>/<sub>2</sub> of new German pedals.

- 61) (9.) Mr. M. Irving, Architectural Carver, 45 Queen Street, Leicester.<sup>xx</sup> n.d. Two alternative, new organs. (i) I/7+1<sup>1</sup>/<sub>2</sub>, c-f<sup>3</sup>. s. Manual Bourdon, one octave only. £120 (PPSS £17.14). (ii) I/4+0, C-f<sup>3</sup>. c. £60 (PPSS £15.00).<sup>xxi</sup>
- 62) (10.) H. Wale, Leicester. 16 November [1858?]. New. Small practice organ. II/10/2+1<sup>1</sup>/<sub>2</sub>, C-g<sup>0</sup>-g<sup>3</sup>. c. Second manual a Choir organ, ‘... should prefer the Clarabella in G.O. Stop Treble in Choir’. *i.e.* the reverse of what is shown. Is this Nicholson’s personal view? £160 (PPSS £16.00).
- 63) (11.) ‘Continued’, another version. 28 September 1858. New. ‘Was sent’. II/1<sup>1</sup>/<sub>2</sub>+1<sup>1</sup>/<sub>2</sub>, C-Swell c<sup>0</sup>-g<sup>3</sup>. c. ‘Without a case’. £160 (PPSS £14.55).
- 64) (12.) Mr. Freeman, St Pauls, Worcester. ‘Sent’ 16 November 1858. Enlargement, new six-stop Swell+1<sup>1</sup>/<sub>2</sub>, II+1<sup>1</sup>/<sub>2</sub> Pedal Bourdon, C-Swell c<sup>0</sup>-g<sup>0</sup>-f<sup>3</sup>.
- 65) (13.) John Serreli, Musical Repository, Market Buildings, Bridgnorth [Shrops.]. n.d. New. ‘Allow 10 per cent’, presumably a trade discount. A firm order? I/4+1<sup>1</sup>/<sub>2</sub>, GG (no GG#)-g<sup>3</sup>. £90 (PPSS £22.50). Gothic deal case, French polished.
- 66) Revd E.H. Niblett, Redmarley Rectory, Newent [Glos.].<sup>xxii</sup> 20 November 1858. New. ‘April or May /59 to complete the instrument.’ I/7+1<sup>1</sup>/<sub>2</sub>, C-f<sup>3</sup>. c. 100 Guineas (PPSS £15.00).<sup>xxiii</sup>
- 67) Llansilin [St. Silin?], near Oswestry, Denbigh [Wales, but part in Shrops]. 16 February 1858. New. ‘Completed’, ‘Sent June 1858’. Are both dates intended to be 1859? I/7+1<sup>1</sup>/<sub>2</sub>, C-g<sup>3</sup>. c. Manual Bourdon, one octave only. £120 (PPSS £17.14).
- 68) (No. 3.) Revd John Lander, Donnington Rectory, Ledbury, Herefs.<sup>xxiv</sup> 1859. New. ‘Accepted’. The page headed ‘Estimates for 1859’, with the ‘9’ altered from an ‘8’. See 85 above. I/3+1 (plus Fifteenth prepared for), C-f<sup>3</sup>. s (prepared for). c. £50 (PPSS £16.67).
- 69) Revd E. Jacson [*sic*], Thrupton Rectory [Herefs.].<sup>xxv</sup> ‘Completed in Kingstone Church April 20th 1859.’ New. I/3+0, C-f<sup>3</sup>. £80 (PPSS £26.67). Oak case.
- 69) Revd Gerald Blunt, Crewe Green, Crewe, Staffs.<sup>xxvi</sup> July [1859?]. New. I+0, C-g<sup>3</sup>. 60 Guineas (PPSS £15.75).
- 70) T.C. Hornyold, Hanley Catholic Chapel [Worcs.].<sup>xxvii</sup> 27 June 1859. Overhaul [I?]+2 and Bourdons, with ‘New valves to Bellows... order given’.

71-73) Three blank pages.

74-5) J. Hopkins, Cathedral Precinct, Rochester [Kent]. 1859. New. III/20/5, C-e<sup>1</sup>-g<sup>3</sup>. c. ‘3 Complete Manuals... Best Materials & Workmanship for the Sum of £500’ (PPSS £25.00). Note that Nicholson uses an *umlaut* for Hohlflute. The organ was not commissioned.<sup>xxviii</sup>

Great:

Open Diapason	8
Viol di Gamba c <sup>0</sup> grooved to above	8
‘Hohlflute’	8
Principal	4
Fifteenth	2

Swell:

Bourdon '16ft tone'	
Horn Diapason c <sup>0</sup>	8
Rohr Flute	'8ft tone'
Spitz Flute	'4ft tone' <sup>xxxix</sup>
Mixture	III
Horn	8
Hautboy c <sup>0</sup>	
Clarion	4

Choir:

Dulciana c <sup>0</sup> grooved	8
Stop Diapason	8
Gemshorn	4
Flute 'metal treble'	[4]
Clarinet c <sup>0</sup>	8

Pedal:

Subbass	16
Violoncello	8

Swell to Great  
Choir to Great  
Great to Pedal  
Swell to Pedal  
Choir to Pedal

Two composition pedals to Great  
Two composition pedals to Swell  
'All Trebles of Spotted Metal  
Concussion Valves to each Organ'.

- 76-8) Revd C.J. Jones, Vicarage, Westbury on Severn, Glos.<sup>xxx</sup> 25 April 1859. Two alternative new schemes, (i) I/6+1<sup>1</sup>/<sub>2</sub>, C-g<sup>3</sup>. Manual Bourdon, one octave only. c. s. £120 (PPSS £25.00). Gothic case, stained oak. (ii) II/15/2+2 (Great Trumpet prepared for), C-c<sup>1</sup>-g<sup>3</sup>. c. 'accepted June 29th 1859'. 200 Guineas (PPSS £14.00). '... every modern improvement'.
- 78) Also, same page, Revd W.R. Davies, Knighton-on-Teme, Tenbury.<sup>xxxii</sup> 1 July 1869 (*sic*, 1859? or see below). A Bryceson Barrel Organ, 'Accepted'. Or, could this be a barrel organ from Knighton (JN: 94, above), which was held in stock for ten years, when this entry might have been made. Thus '1869' next to a certain 1859 entry.
- 79) St. Thomas's Church, Dudley [Worcs.]. n.d. Alterations and additions. Page heading only.
- 80-1) Revd C.T. Heartley[,] Oldwood, organ for Queens' College, Cambridge.<sup>xxxiii</sup> 17 October 1859. New. 'Refer to page 1 1860'. II/13/2 (plus a spare [8?]) Pedal slide), C-e<sup>1</sup>-g<sup>3</sup> (Swell C-B, octave of stopped pipes only). c. £250 (PPSS £19.23).
- 82) F. James Bellamy, 16 St Owens Street, Hereford. 29 November 1859. New. 'Thos. Trouncer Esq. Moorfield House, Hereford presented it to the Chapel. Completed March 3rd. 1860.'<sup>xxxiiii</sup> I/7+1<sup>1</sup>/<sub>2</sub>, C-

g<sup>3</sup>. c. s. Manual Bourdon, one octave only. £120 (PPSS £17.14).

- 83) A. Graham Clarke Jnr., Frocester, Stonehouse, Glos. 7 December 1859. New. I/3+0, (plus a Fifteenth or Flute 4' prepared for), C-f<sup>3</sup>. £50 (PPSS £16.67).
- 84) (Page 1.)<sup>xxxiv</sup> Revd W.M. Champion, Queens' College, Cambridge. 'as decided upon Jan 3rd 1860'. New. Slightly larger scheme than 98 above. II/14/3 (plus a spare Great [Trumpet?] slider), C-e<sup>1</sup>-g<sup>3</sup>. Pedal stop an Open Diapason. 'For £270' (PPSS £19.29).

Great:

Open Diapason	8
Clarabella and Stop Bass	8w
Viol di Gamba c <sup>0</sup> grooved bass	8
Stopped Flute 'Throughout'	
Principal	
Fifteenth	
Mixture	IV
Spare slider	

Swell:

Bourdon 'Stopped throughout'	16
Stopped Diapason	8
Spitz Flute 'or Open to tenor C'	8
'Gemshorn or Principal'	4
Piccolo	2
Cornopean	8

Pedal:

Open Diapason	16
Swell to Great	
Great to Pedal	
Swell to Pedal	

- 85) (Page 2.) W.C. Barrows, 23 New Walk, Leicester.<sup>xxxv</sup> 7 November 1859. New. 'as decided upon'. I/5+1, C-g<sup>3</sup>. c. s. Manual Bourdon 'CCC-D'. 'One octave and 13 notes of Pedal Bourdons to act on Pedals[,] not on the Keys[,] which stop at B.' £102-15sh (PPSS £20.55). Mahogany case and gilding.
- 86) (Page 3.) Revd C.J. Sale, Holt Rectory [Worcs.].<sup>xxxvi</sup> [Late 1859-61.] New. I/4 (plus a Fifteenth prepared for)+1<sup>1</sup>/<sub>2</sub>, C-g<sup>3</sup>. c. SB2: WP, 1860, 2<sup>1</sup>/<sub>8</sub>" wind. £95 (PPSS £23.75).
- 87-9) (4.) Manchester Cathedral [Lancs.]. n.d. New. III/42/5, C-f<sup>1</sup>-g<sup>3</sup>. c. £878 (PPSS £20.90). Opened 15 October 1861. 'Harrison at opening.'
- 90) Miss Emily Monk, St James the less Church, Upper Garden Street, Westminster, London.<sup>xxxvii</sup> 29 September 1860. New. '... carriage to be paid by the party who gave the order... completed and opened' 31 July 1861. II/17/2+2, C-Swell c<sup>0</sup>-c<sup>1</sup>-g<sup>3</sup>. £220 (PPSS £12.94). No case.<sup>xxxviii</sup>
- 91-92) St Mark's Church, Torquay [Devon]. New. Opened October 15 1861. III/18/5 (plus six named stops prepared for), C-f<sup>1</sup>-g<sup>3</sup>. c. £400 (PPSS £22.22). 'Case included'. First mention of a radiating and concave pedalboard.

Organ for St. Mark's Church Torquay.  
 E.W. Whinfield Esq.  
 Kendal Villa  
 Torquay [Devon]

The Revd. R. Hogg. Incumbent & Mr. Wood. Sec.[?] committee

Great Organ. CC to G 56 Notes.

1.	Open Diapason	Met: Thro:	8ft
2.	Slide for Stop Diapason		8ft*
3.	Gamba to Gamut G.	Metal	8
4.	Wald Flute or Clarabella	Wood open	8
5.	Principal	Metal	4
6.	Slide for Flute	Wood Stopped	4*
7.	Twelfth	Metal	2 <sup>2</sup> / <sub>3</sub>
8.	Fifteenth	Metal	2
9.	Mixture 3 ranks	Metal	
10.	Slider for Trumpet thro'	Reed	8*

Swell Organ CC to G 56 Notes.

11.	Double Diapason or Bourdon		16ft.
12.	Open Diapason		8
		Met Gam G rest wood	
13.	Slide for Stopped Diapason		[8]*
14.	Dulciana	Gam: F. Metal	8
15.	Principal	Metal	4
16.	Mixture 4 ranks	Metal	
17.	Cornopean	Metal	8
18.	Slider for Cremona or Oboe <u>Reed</u>		8.*

Choir CC to G. 56 notes

19.	Spitz flute	Metal	8
20.	Stop Diapason		8
		metal to Tenor C rest wood	
21.	Slide for Viol di Gamba Gam G		8*
22.	Gemshorn		4
23.	Slider for Cremona Throughout		8.

Pedal Organ CCC to F. Radiating & Concave

24.	Subbass	Wood open.	16ft
25.	Bourdon	Wood stopped	16ft

Couplers.

26.	Great to Pedals
27.	Choir to Pedals
28.	Swell to Pedals.
29.	Swell to Great.

29. Swell to Choir.

Concussion valves to each Manual Organ

3 Comps to Great Organ, case included. Carriage and all expenses for the sum of £400 to be paid when complete in the Church of St Marks, Torquay. Revd. R. Hogg. Incumbent Mr. Olding Clerk.

Stops marked in Red are not inserted for the above Sum.<sup>1</sup> [Here labelled \*. Marked in the Notebook with a double cross and written in red ink.]

The Notebook entry concludes, 'Opened Oct 15th 1861. Harrison at opening'.

- 93) Revd G. Halls, Clent Vicarage, near Stourbridge [Worcs.].<sup>xxxix</sup> 1 March 1861. Rebuild. '... repairing & improving...' I? s. Work believed undertaken.
- 94) Revd J. Lomas, 6 New Town Street, Leicester.<sup>xl</sup> 'To be completed June 9th 1861'. New. II/13/2 (plus Great Sesquialtra and Swell Piccolo prepared for)+1<sup>1/2</sup>, C-Swell c<sup>0</sup>- f<sup>0</sup>-f<sup>3</sup>. c. £180 'Cash' (PPSS £13.85).
- 95) Revd A. Kent, Coln St Aldwyn, Fairford, Glos.<sup>xli</sup> 18 July 1861. New. 'accepted'. I/6+1<sup>1/2</sup> (plus Sesquialtra prepared for). c. s. Manual Bourdon, one octave only. No mention of casework. £105 (PPSS £17.50).
- 96) T.G. Curtler, Barbourne Church, Worcester.<sup>xlii</sup> 15 August 1861. New. Indication that it was commissioned. II/14/2+2 (plus Sesquialtra prepared for), C-c<sup>1</sup>-Swell c<sup>0</sup>- g<sup>3</sup>. Pedal stop an Open Diapason. £230 (PPSS £16.43).
- 97) Revd G.S. Munn, Madresfield, near Malvern [Worcs.].<sup>xliii</sup> 28 August 1861. New. Order given. I/4 (plus preparation for Flute 4' and Fifteenth)+0, C-f<sup>3</sup>. '... to blow by hand or foot'. £105 (PPSS £26.25). Oak case.
- 98) Cuddesdon Church, Oxon.<sup>xliv</sup> Revd H.H. Swinny, Wargrave Rectory, Henley on Thames.<sup>xlv</sup> New. 'Order given June 22 1861. To be Completed Nov. 18th [or 16th] 1861.' I/7/1, C-f<sup>1</sup>-f<sup>3</sup>. c. £140 (PPSS £20.00). Estimate included the 'expense of reversed Keyboard[,] £15', plus 'Pedals 1 third higher[,] £5'. These deducted, give a cost of £120 (PPSS £17.14).<sup>xlvi</sup>

Cuddesdon Church

Oxon.

Revd. H.H. Swinny

Wargrave Rectory

Henley on Thames

Compass CC to F 54 Keys

1. Open DiapasonMet' Thro'54

2. DulcianaTenor C42

3. Stop DiapasonBass12

4. Stop DiapasonTreble42

5. PrincipalMetal Thro'54

6. FluteWood Thro54

7. Fifteenth54

---

<sup>1</sup> In red ink also.

8. Pedal Coupler  
9 [left blank]

Two octaves & 3rd. of 16ft tone Bourdons  
Two ' ' ' of German Pedals  
3 Composition Pedals.  
Expense of reversed Keyboard £15 15  
Pedals 1 third higher 5  
Price of Organ 120  

---

£140

Order given June 22nd 1861.  
To be Complete  
Nov 18th 1861.  
J.N.<sup>xlvi</sup>

\*

The remaining pages are blank until the piece-work notes.

\*

#### THE LETTER AND THE NOTE:

The volume contains two loose pages and these are analysed in Folder 2 and reproduced in Folder 3.  
The first is a letter:

41. Lawrence Sherriff St., Rugby.  
Sept. 8th 1861.

To Mr. Nicholson.  
Sir,

I shd. much wish you to send me a design & an estimate for a small Organ about the Size of the last one only let it be a C organ. If I can possibly keep them waiting till you can do it[,] I will, for being near Rugby it would just suit you for the [mov?]ing and I think would lead to another Organ also. It will be the gift of the Rector[.] I shd. say therefor that the money would be paid as soon as it is put up as far as I can judge. The design for the Organ would be Gothic. not an expensive case for it is not wished to be a large organ or an expensive one -

Open diapason  
Dulciana or Flute  
Stop Diap.  
Principal  
Fifteenth or Reed

Bourdon pedals to be an Octave lower than keys-could there be two Octaves of Pedals & of course a general Swell. Can you do me the above for eighty pounds. Trusting to hear from you very soon.

I am very truly  
E.S. Lawrence

Please let me hear from you without delay for the Gentleman is going out for 2 weeks & wishes



it decided before he goes.

The second records a:

Specification and estimate for repairing the chapel Organ[.]

The whole of the pipes to be taken out[,] cleaned, repaired, revoiced and tuned-£12[.]

The Great Organ Soundboard to be taken out, and the valves releathered[.]

Swell Door's [*sic*] reclathed and refitted.

New Coupler pins. Bellow's [*sic*] and bellow's [*sic*] handle to be put in good repair from £8 to £10 extra[.]

The whole of the work to be done if possible for £20, [to £]xlvi<sup>ii</sup> and in any case[,] not to exceed £22<sup>xlix</sup> including all expenses[.]

[signed] John Nicholson

Worcester Jany. 15th 1861

To Thomas Baylis Esq

Edited transcription © James Berrow, March 1995.  
Not to be used without acknowledgement.

---

1 MS W3/1 abbreviated to JN.

<sup>1</sup> Elsewhere I have used 'Swithun' to follow the usage of the building's present trustees.

1 The first reference to composition pedals.

1 Patrons, the dean and chapter of Worcester Cathedral (*Clergy list* 1841: (214)).

1 WC 3 January 1843: 3, Mr Fowler, bookseller, offered a house organ for sale in January 1843. It was in a mahogany case, had ten stops and was 'put in complete repair by Flight and Robson within the last three years...' and cost 'upwards of 100 Guineas.' The price asked was £45.

1 Unsuccessful estimate. Sperling II: 113, n.d., Cellini. 'Built by Cellini for Tardebig [*sic*] in Warwickshire [*sic*] the seat of the Earl of Plymouth / removed to this church in 1790 - originally one row of keys GG to D in alt. Enlarged by Willis in 1844 and a Swell added by Hill in 1852. *Clergy list* 1841: (209), patron Lord Sudeley. See Burke 1859: 962-5, Thomas-Charles Hanbury Tracy of Toddington, born 1801, Lord-lieutenant of Montgomeryshire.

1 *Clergy list* 1841: 213, is this Bilston, near Wolverhampton?

1 *Clergy list* 1841: (26), patrons, the dean and chapter of Lincoln. *Clergy list* 1851, the Revd J.B. Jebb was curate of St Thomas, Brampton, near Chesterfield, Derbys., from 1846.

1 *Clergy list* 1841: (6), the Revd Henry James Hastings, incumbent from 1831.

1 *Clergy list* 1841: (83), The Revd A.B. Lechmere, vicar of Welland (Hanley Castle) from 1828 and vicar of Hanley Castle from 1839. The patron was Sir A. Lechmere. WC 21 June 1879: 8d, report of Sir E.A.H. Lechmere, Bart, M.P. (one of two M.P.s, representing Worcester) and Ouseley attending a Gaudy together at Christ Church, Oxford. A commissioning connection? *Clergy list* 1877: (339), patron Sir E.A.H. Lechmere of Hanley Castle. Also a J. Lechmere is patron of Ludlow, Salop. See also JN: 88 footnote.

1 See also JN: 88 and the customer, a Mr Hornyold. There is a Hornyold Terrace in North Malvern (Littlebury 1879: 309).

1 Recorded 'No 1', in the same hand.

- 1 The first fully modern *German* instrument with a thirty-note pedalboard. £700, plus the old organ (PPSS £26.92). Was it significant that Nicholson did not list inter-manual couplers for this organ in his Notebook? With the exception of the additional stops marked \*, the specification is identical to Witley (1857).
- 1 Not in the 1846 directories. Kelly 1855: 70, George Augustus Lohr, professor of music, 34 Belvoir Street, Leicester. See also, page 72, Henry Nicholson, professor of music, 14 Halford Street, Leicester (White 1877: 396), A. Nicholson & Co., yarn agents, Victoria Buildings, Queen Street, Leicester. See Appendix 2.3: Humberstone.
- 1 No mention of pedal *pipes* in either estimate.
- 1 Kelly 1855: 71, Charles Merryweather, chemist and druggist, 18 High Street, Leicester.
- 1 *Crockford* 1860: 219, vicar of Thorverton, Collumpton, Devon, from 1858, later Principal of Chichester Theological College. Patrons of Thorverton, the dean and chapter of Exeter.
- 1 Kelly 1855: 76, Henry Wale, hosiery, manufacturer, Pocklington's Walk, Leicester and an Amos Wale, hairdresser, Russell Square, Leicester. White 1877: 391, H. Wale, 25 Belvoir Street, Leicester. White 1877: 487, Henry Wale, hosiery manufacturer, 25 Belvoir Street and Lower Brown Street Mills, Leicester; home 'Harborough'.
- 1 The latter facility survives at St John, Mount Bures.
- 1 Not found in 1846, 1855 or 1877 Leicester directories. But at Victoria Buildings, Queen Street, Leicester, an A. Nicholson & Co., yarn agents (White 1877: 396). See Gazetteer 3: Humberstone.
- 1 Might this have related to the provision of a case for the instrument in JN: 76 above? See 'Without a case', in JN: 81.
- 1 *Clergy list* 1861: (190), rector, Redmarley D'Abitot from 1853.
- 1 Different from JN: 52, above.
- 1 *Clergy list* 1861: (70), incumbent from 1845.
- 1 *Clergy list* 1861: (227), incumbent from 1858, following the Revd H. Wetherell, instituted in 1799! Patron, the bishop. Jacson was the brother-in-law of the Revd Thomas Bulkeley-Owen of All Saints, Shrewsbury, a friend of Ouseley.
- 1 *Clergy list* 1861: (15) and (62), the Revd Abel Gerald Wilson Blunt, was rector of St Luke's, Chelsea, Midd., and domestic chaplain to Lord Crewe, who was patron of Crewe Green parish church. The incumbent, from 1860, was the Revd J. Ellerton. St Michael's was built by G.G. Scott, 1857-8, Pevsner 1971: 191-2.
- 1 Littlebury 1879: 603, Thomas Charles Gandolfi Hornyold, J.P., D.L., of Blackmore Park. Note that Hanley Castle (house) is the property of Sir Edmund A.H. Lechmere, Bart., M.P. See JN: 66-7.
- 1 MS W1/1: 18, notes that Done was appointed organist of Worcester Cathedral, in Bishop Murray's time. Murray, besides being Bishop of Rochester held the living of Bromsgrove as well as the deanery of Worcester.
- 1 Does this indicate a stopped rank?
- 1 The *Clergy list* 1861 confirms that the Revd Christopher C. Jones was incumbent from 1858. The patrons were the Custos and College of Vicars Choral in Hereford Cathedral.
- 1 The *Clergy list* 1861 confirms that he was incumbent from 1844.
- 1 *Clergy list* 1861: 145, the Revd Chas. Tebbott Heartley was curate of St Michael's, Tenbury, Worcs., and *Clergy list* 1851: 122, curate of Kemerton, near Tewkesbury, Glos. (See Gazetteer 3 and SB2: WP, n.d.) *Clergy list* 1877: (175) 'Old Wood' is a reference to the estate at Tenbury on which St Michael's College was built. *Cantab.*, part 2, volume III: 311, admitted pensioner of Queens', 17 May 1845. He 'migrated' to St Catherine's when he came up to Cambridge. Eventually became headmaster of St Michael's College, Tenbury, 1856-61; then of Swansea Grammar School, 1861-78. Rector of Cheveley Cambs., 1878 to his death in 1894.
- 1 *Clergy list* 1877: (361), a T.W. Trouncer of Shrewsbury was patron of Mickleover, Derbys.
- 1 Recorded 'Page 1' in the same hand.
- 1 White 1877: 391, William Charles Barrows, 23 New Walk, Leicester, no profession. In White 1846: 124, a Wm. Barrow, brickmaker of Stanley Street, Leicester.
- 1 *Clergy list* 1861: (109), incumbent, with Little Witley, from 1847, patron the Earl of Dudley.
- 1 Kelly 1846: 377, Mrs Emily Monk, milliner, 20 Broadley Terrace, Blandford Square. Pevsner and Harris 1973, I: 491-2, the church built by Street, 1860-1, 'at the expense of the Misses Monk in a poor neighbourhood and says *Illustrated London News*, 'rises as a lily among weeds'. Location given as Thorndike Street, Vauxhall Bridge Road. *Clergy list* 1861: (146), rector, the Revd J.E. Kempe, from 1853.
- 1 Note, *Cantab.*, IV: 16, John Edward Kempe of Bromley, Kent, rector of St James', Piccadilly (1853- 95), died 1907. Note the Kempe family of the west country. *Oxon.*, ser 2, parts 1-2: 785, the Revd George Henry Kempe of St Mabyn, Cornwall, rector of Bicton, Devon from 1845; his son, the Revd George Henry Kempe of Budleigh Salterton, rector of Farnborough, Somerset (1877-82) and vicar of St James', Croydon (1882-?) and the Revd John Kempe of St Tudy, Cornwall, vicar of Fowey 1818, until his death in 1863.
- 1 *Clergy list* 1861: (55), incumbent from 1860.
- 1 Not in 1846 directories. *Clergy list* 1861: (237), a Revd John Lomas was incumbent of Holy Trinity, Walton-on-the-Hill, Liverpool, from 1846. A Lancashire connection, around the time of the Manchester Cathedral com-

mission?

- 1 *Clergy list* 1861: (58), the Revd Alfred Kent, vicar from 1853.
- 1 *Clergy list* 1867: 86, the Revd Thomas Gale Curtler, incumbent of St Stephen, Barbourne, Worcester. SB2: WP, 1862 2<sup>3</sup>/<sub>8</sub>". WC 21 August 1862: 2e, report of the consecration of the new church, with organ. II/16/2, C-Swell c<sup>0</sup>-f<sup>1</sup>-g<sup>3</sup>. A Great Sesquialtra; Pedal stop an Open Diapason only. Radiating and concave pedalboard. Mr J. Caldicott, assistant organist of the cathedral appointed organist.
- 1 *Crockford* 1891: 939, George Shaw Munn, rector of Madresfield from 1856.
- 1 The proximity of the church to the then Bishop's Palace may have offered commercial benefits, given the influential visitors.
- 1 *Clergy list* 1861: 299, the Revd Hy. Hutchinson Swinny, Principal of Cuddesdon Theological College. He was also rector of Wargrave.
- 1 According to Mr K. Randall, organist of All Saints', Cuddesdon, Oxfordshire, in conversation, October 1993, the Nicholson instrument was sited against the east wall of the north transept, with the player facing east. It was removed before the Second World War
- 1 This is the final entry for an organ, over seventeen years after the notebook was started by Nicholson in August 1843. Unlike the Colne St Aldwyn instrument (JN: 113), Cuddesdon had a pedal board of 'two octaves & 3rd'. As an extra £5 is charged for 'Pedals 1 third higher', the first compass mentioned must be C to d<sup>1</sup>, with the next '3rd' taking it to the full compass of f<sup>1</sup>, a 'third' meaning three semitones.
- 1 Originally £17, but over-written £20.

1

Changed from an illegible number.

The making of an English organ builder:  
John Nicholson of Worcester, formation life and work

**2 JN NOTEBOOK:** The John Nicholson Notebook, deposited in the Worcestershire Archive and Archaeology Service (previously the Hereford and Worcester Record Office, St Helen's, Worcester). 850, St Andrew BA4426/30.

**THE JOHN NICHOLSON NOTEBOOK (JN):  
AN ANALYSIS OF THE MAJOR PRIMARY SOURCE**

Apart from a few business letters and agreements in customers' archives, no documentary material is known to survive in John Nicholson's hand, with the exception of one notebook, which intermittently records details of some of his organs. The book contains a letter *to* John Nicholson (a great rarity) and a note in his hand referring to a specification and estimate for an un-named organ. Both are dated 1861 and are transcribed below. As the only known working notebook associated with Nicholson, this volume is an important source. Its contents are summarised in Folder 4.

**Physical description:**

A handsome, white volume, bound in parchment; measuring 168 mm. horizontally x 272 mm. vertically x 31 mm. thick. The pages are un-numbered, made of rather soft, absorbent paper, ruled in faint blue, with three columns to the right, cash-ruled in red ink. There are about 200 leaves (*i.e.* 400 pages), water-marked 'Beilby & Knotts' (a Birmingham publishing house) at ninety degrees to the horizontal, with horizontal lines at 1<sup>1</sup>/<sub>32</sub>" centres.<sup>1</sup> The fly-leaves are marbled and the price, '7/6' is pencilled in the front leaf.

THE BUILDING ESTIMATES:

**Description:**

The first 27 pages are dated 15 September 1830 to 14 February 1833 (when Nicholson was fifteen and eighteen years of age respectively). They show a mature, confident tradesman at work and are written in ink, with numerical information and workings out in pencil. The jobs vary in size, from the provision of a water closet, to the building of two new houses. In between are various levels of mostly modest work, such as a porch extension, cellar excavation and so on. All the named locations are in Worcester, except for 'Mrs. Adam's' of Eardiston. There is a village of that name near Oswestry, Shropshire (Llansilin Church (JN: 85), is only ten miles away) and another, more likely candidate, near Lindridge, Worcestershire, where Thomas Nicholson (1823-95, born in Lancashire)<sup>li</sup> built the church in 1861. Of course, 'Eardiston' could be the name given to a house in the Worcester district but this is unlikely (see below). There are no other clues which obviously link the building locations or clients with John Nicholson, his family or his subsequent business. The final two pages of the building estimates are reproduced in Folder 3.

**Authorship and usage:**

Nicholson's youth and his known residence in Rochdale, when the building estimates were written, eliminate him as the writer of this section of the Notebook.

The identity of the first owner of the book and author of these notes may be John Nicholson of Bradford (born 1791), or Thomas Nicholson also of Bradford (born 1800). They were brother and half-brother, respectively, to Richard Nicholson (the uncles of John of Worcester). They are recorded as joiners in Bradford before 1837.<sup>lii</sup> Could one or both of them have come to Worcestershire to help install one of Richard's organs, perhaps working on associated civil work - gallery strengthening, *etc.* If so, the writer

may have stayed on for a while, profitably employed as a jobbing builder and joiner. Another candidate for authorship is Joshua Nicholson,<sup>liii</sup> of Luddenden Foot and Bradford, known to be a builder and, possibly, John of Worcester's grandfather.<sup>liv</sup> Another contemporary Nicholson connection was the Revd Emilius Nicholson (1792-1864, see chapter 3 for details of him and his father), who lived in Shropshire around this time. Eardiston is only fourteen miles or so from his Habberley parish.

## THE ORGAN ESTIMATES:

### Description:

These entries are the substance of the Notebook, dated 18 August 1843 to 18 November 1861.<sup>lv</sup> They are in ink and, although all appear to be in the same hand, they vary in neatness, probably according to the circumstances in which they were written. Legibility is not good, due to the very thin up-strokes and faded ink. Red ink is occasionally used to underline or mark one (organ) department from another and sometimes to indicate stops or facilities which were to be *prepared for*. In general, the notes are drafted as if for inclusion in formal correspondence and may have been the only office copy. They include promotional lubricants, such as, 'The above will make your Organ a very complete and Effective Instrument'<sup>lvi</sup> and are sometimes signed. However, there is no anecdote, digression or (apparent) later comment. There are few clues to indicate whether the entries were the result of site surveys, speculative postal enquiries or callers at the workshop and, frustratingly, they do not always indicate whether they led to firm orders. The remaining pages are blank, with the exception of six pages towards the back, which record, in Nicholson's hand, details of piece-work by a wood pipe maker named Jones (see below).

### Presentation:

From October 1858, Nicholson intermittently introduced his own organ- and page-numbering system in the top left-hand corner of the page.<sup>lvii</sup> Specifications, and occasionally pages, are numbered in a rather haphazard fashion, which suggest that he was seeking a job-numbering or reference system which was never consistently achieved in the eighteen years covered by the Notebook (longer, from the start of his tenure in Worcester).<sup>lviii</sup> Surely, by then, if he had found a satisfactory method, such as that used by William Hill, he would have consistently implemented it. Also, according to the Notebook, he did not develop a system for distinguishing between unsuccessful quotations and successful orders and the entries give an impression that he may have re-used earlier quotations as reference for subsequent new work. The documentary material which survives from the post-1885 company, after Nicholson's retirement, does not suggest that his successors inherited administrative disorder, although the handlists of organs by the firm, produced in the William Haynes era, do not start (with one or two exceptions) until 1865 and are full of minor errors. A complete set of surviving shop-books would have avoided this and it is presumed that, by then, records were already lost. Once the company was firmly established, perhaps the Notebook was no more than a personal record of some early work and then, later, more prestigious estimates, usually outside Worcestershire; a talisman rather than a total record.

### Usage:

The Notebook raises many questions about its procurement, use and survival.

i) How did the Notebook come into John Nicholson's possession?

Were it not for the initial use of the book for builder's estimates, such an expensive and pleasantly produced volume might reasonably be assumed to be a gift from a father or family, to a young man setting out on a new life in another part of the country. It is possible that it was a gift to Nicholson from an unknown Worcester-based joiner and builder around 1843, but that explanation seems unlikely, given Nicholson's short tenure in the city. More prosaically, perhaps Nicholson bought it second-hand, or it came with tools or premises used by a previous owner. The only known candidate is William Hemming of Palace Yard, but

this suggests a Palace Yard connection *before* 1845. But if the part-used notebook belonged to John or Thomas of Bradford who, by 1837, were both known to have become organ builders, its substantially unused pages, with their Worcestershire connections, may have prompted an offer from one of the uncles to his similarly employed nephew, moving to the familiar county to start a new business.<sup>lix</sup>

ii) How was the Notebook used?

It appears that it was not necessarily an on-site work book and the organ building content, although sometimes written in a rushed hand, is better suited for *showing* to a client, or as the draft of a letter to be written out by himself or a clerk. Some entries are marked 'sent' (JN: 81, 82, 85) and Nicholson appends his signature to others, perhaps experimenting, as these are usually different in style (JN: 51, 54, 55, 60, 94). Some of the flowery language is more related to marketing than design and construction. As a young man in new territory, the Notebook records at least one early effort by Nicholson to offer a guarantee to a potential customer who had no personal experience of his work. At Studley Church, Warwickshire (1843), the new two-manual organ is 'to be of the best materials and Workmanship subject to [the judgement of] any Competent person...' (JN: 53). The approach to stop-lists is very conservative and there is little variation within the formula decided by the number of stops in a department. Few measurements and little technical information are recorded and there is no tonal comment. It is a record of organs by appearance and facility, rather than an indication of how the instruments may have sounded; either stop against stop, department balanced with department, or overall volume in the building. No scaling information is given, apart from one entry (JN: 61) which described the enlargement of an organ and noted that 'the Stop Diapason [is] to be enlarged in due proportion...'. Stop-lists apart, it gives more information on casework materials and finishes than anything else. Final prices, cost of carriage and, occasionally, some additional stop or mechanical options are the only figures recorded; there is no working out of costs on these pages. Either Nicholson carried current prices in his head, and relied on experience to adjust, or the calculations were made elsewhere.

The Notebook offers little information on the role which Nicholson took in the company. Not one of the entries indicates the involvement of his hand in the voicing or finishing process. Was he more involved in selling and administration? His civic roles in these years, paid or unpaid, must have cut into conventional working hours and it would be easier to burn the midnight oil at a desk, rather than at the voicing machine, an unsocial activity in the close confines of Palace Yard.

A similar notebook, in appearance and size, was used by Elliot and Hill from 1829 until about 1835,<sup>lx</sup> some years after Elliot's death in 1832.<sup>lxi</sup> Did John Nicholson see William Hill at work with the dean and chapter of Worcester, just after his arrival in the city? If so, some of Hill's business style, personality and use of stationery might have rubbed off.

iii) Why are there large chronological gaps in the entries?

Nicholson established his business in Worcester by at least 1841, but the first Notebook entry is for August 1843. Although spanning a period of eighteen years (not counting the piece-work notes), there are unaccountable gaps of more than seven years between late 1845 and April 1853 and five years between June 1853 and October 1858, the latter a very good year for business. (Inevitably, the gaps in the St Alban's vestry minute book, considered in chapter 7 come to mind.)<sup>lxii</sup> In the Notebook, Nicholson appeared to be recording either modest but formative work, *e.g.* the addition of a Swell organ at St Swithun, Worcester, or notes which related to prestigious contracts, *e.g.* Manchester Cathedral, Rochester Cathedral, Queens' College, Cambridge and so on. This is understandable and underlines pride in his expanding business. However, why were so many other important instruments of this period omitted? For instance, the very large commission for the Shire Hall, Gloucester (1849), the Music Hall, Worcester (1854) and St Michael and All Angels, Great Witley (1859).

The first interruption in 1845 can be accounted for by the fire in his Worcester workshop, on 18 June

1845.<sup>lxiii</sup> John then advertised his new premises in Palace Yard on 17 September 1845<sup>lxiv</sup> and the move from the fire-damaged premises may not have been total at that date, hence the post-fire entry (JN: 64) in October of that year. (The Notebook shows no sign of fire damage.) Perhaps the Notebook was then put into a box for removal and remained un-packed until 1853. No other significant event can be attributed to that year. Neither is there any indication to show why the entries finish so abruptly after another busy year in 1861. Perhaps morale was damaged by the criticisms of his Manchester Cathedral organ (1861), especially if inclusion in the Notebook reflected personal achievement, rather than just business matters.

Might the book have been used more often when office staff or procedures were, for whatever reason, in a state of change?<sup>lxv</sup> There may have been one, or more, other notebooks, now lost, but used in parallel with this survivor. Perhaps it, or they, might not have been as attractively bound and thus lacked the keepsake value for the surviving family.

iv) How did the Notebook survive and how did it come to be where it is today?

On Nicholson's retirement in 1886, the Notebook was probably removed from the sale of the company as a personal memento, or was already kept at home. After all, even if incomplete, it contained details of some prestigious organs. The very last entry (the piece-work rates) relate to 1863 and, as the book was not then connected with the day to day running of the company, John might have taken it as a retirement souvenir. But such mementos rarely occupy a space on the family sideboard for long, and after his death in 1895, it may have lain undisturbed until his wife died in 1897. The family connection with Worcester was, by then, tenuous. The only surviving child was his third daughter, living in Dulwich. It is reasonable to believe that, in the eyes of whoever tidied up the personal belongings at 6 Lark Hill, Worcester, the book, with its apparently incomprehensible notes, was not thought valuable or interesting enough to retain; however, it had enough curiosity value for the executors or descendants to pass it on to someone for safe keeping and who better than a friendly clergyman with a vestry safe? The book now rests among unrelated, nineteenth-century, parish papers, in the St Andrew's parochial box. This church was only a stone's throw from the workshop and contained a Nicholson organ (1850).

#### ANALYSIS:

The entry headings are ambiguous but there are fifty-four entries, with fifty-five alternative estimates for forty-six locations. Only twenty-one of the estimates or specifications listed can be categorically determined to have been accepted, according to evidence in the Notebook itself. Although it can be confirmed from other sources, that thirty-eight resulted in orders. Ten were enlargements, *etc.*, two were for miscellaneous minor work and thirty-eight schemes were designated new:

- Size:
- 7 one-manual, pedals unlikely.
  - 2 one-manual, 1 octave of pedals.
  - 16 one-manual, 1 1/2 octaves of pedals.
  - 3 one-manual, 2 octaves of pedals.
  - 1 one-manual, C-f<sup>1</sup> pedals.
  - 2 two-manual, pedals unlikely.
  - 8 two-manual, 1 1/2 octaves of pedals.
  - 5 two-manual, 2 octaves of pedals.
  - 2 two-manual, C-e<sup>1</sup> pedals.
  - [N.B. 0 two-manual, C-f<sup>1</sup> pedals.]
  - 1 three-manual, C-e<sup>1</sup> pedals.
  - 3 three-manual, C-f<sup>1</sup> pedals.

- Features:
- 6 organs with GG-compass manuals (the latest, *circa* 1858).
  - 2 f<sup>0</sup> Swell (1843 and 1844).
  - 9 c<sup>0</sup> Swell (the latest, 1861).

20 manual compass to f<sup>3</sup> (in use up to the final entry).

24 manual compass to g<sup>3</sup> (the first, 1858).

12organs in a general swell.

Locations *mentioned* can be summarised thus:

Cambridgeshire	1
Denbigh	1
Derbyshire	1
Devon	2
Gloucestershire	7
Herefordshire	3
Kent	1
Lancashire	1
Leicestershire	6
London	1
Oxfordshire	1
Shropshire	1
Staffordshire	2
Warwickshire	2
Worcestershire	15
not known	1

#### CONCLUSIONS:

In conjunction with other evidence, this Notebook confirms some orders, demonstrates alternative schemes and throws a little light on Nicholson's thought processes, working methods, prices and the way in which he handled customers' enquiries.

Old-fashioned customers are one thing, but the first-hand language of the Notebook often portrays conservative thinking on the part of the organ builder. The largest number of estimates are for one-manual organs with one-and-a-half octaves of pedalboards and one of these is built as late as July 1861 (JN: 113) and a one-manual, without pedals, was ordered in August of that year. As late as 1858, a one-manual instrument, was built with 'Keys and Pedals to slide in and out at pleasure...' (JN: 76). These examples, along with the retention of the GG-manual compass until, at least 1858,<sup>lxvi</sup> demonstrate a conservative survival in Nicholson's work for much of these years, set against the reformed ideals which show through in his larger instruments by the late 1840s. The earliest 'German principle' instrument recorded in the Notebook was for St Mary, Hanley Castle (1853), with two manuals and two octaves of pedals (JN: 66-7). But even here, the Bourdon was shared between Swell and Pedal (see Studley below). In 1858, the three-manual instrument for St John, Bromsgrove (JN: 71-2), is unmistakably *modern*, with the first recorded thirty-note pedal-board. The first Notebook mention of a radiating and concave pedalboard is for St Mark, Torquay (1861, JN: 109-110).

The manual specifications of the later organs show Nicholson still producing individual, non-standard instruments in the insular tradition. The retention of the Stop Diapason Bass drawstop seems, at first sight, to be unnecessary, as it could just as easily be a grooved bass, shared between the Dulciana and Stop Diapason. However, it is possible to justify its use on musical grounds if the 4' and higher stops are used, with the player transposing an octave down. In this case an appropriate manual unison rank can be drawn as a *double*, without the (often generously scaled) bass pipes, which would otherwise obliterate the harmonies of the bottom octave.<sup>lxvii</sup>

#### Manual compass:

Manual compass is erratic. Only two of the six GG-compass organs note the absence of the GG# (JN: 55



and 83) and one organ specifically includes the note (JN: 61-62). Even when offering two alternative, one-manual schemes to the same potential client, as at Thorverton, Culhampton (1858), one instrument runs to f<sup>3</sup> and, for no obvious reason, the other is to g<sup>3</sup> (JN: 75). Twenty-four organs are recorded with g<sup>3</sup> compass (one of these from GG) and twenty to f<sup>3</sup>.

### **Pedals:**

The small, early organs were often inconsistent in the provision of 16' tone. When a one and a half octave pedalboard is documented, the number of notes and pipes to the pedalboard are rarely recorded and there is further confusion with the (mis-use of reversed?) manual to pedal coupler information, *e.g.* 'Octave Couplet [*sic*] from Pedals to Great' (JN: 53). Two instruments are recorded with one-octave pedalboards, but one-and-a-half octave pedalboards are apparently only provided with a single octave of pipes. It was commonplace for a *manual* Bourdon to be of one octave only (JN: 53, 1843, to JN: 113, 1861, *passim*), probably playable on Swell *and* Pedal. Such a solution to 16' provision was installed at Studley (1843). The Notebook entry is not entirely clear, but the two-manual instrument was to be 'on the German Scale Compass of the Key Board from CCC to F[,] 66 Keys[,] the lower Octave to Act upon the Bourdon... With an Octave of Bourdon pipes to CCC an Octave and half of Pedals...' (JN: 53). Presumably the bottom octave of the manual keyboard (CC-BB) was dedicated to the Bourdon 16' and was intended to provide a complete bottom octave to the C-compass unison stops.

### **Couplers and accessories:**

From September 1843 onwards, Nicholson provided consoles with playing aids; thirty-one of the schemes have composition pedals, which appear in a matter-of-fact way in the notes and this facility also featured on organs without pedalboards. Although this feature was taken for granted in the estimates, the provision of couplers, when specified, is described in much more flowery terms, 'Couplet to connect the Swell and Great Organ together...' (JN: 53) and 'Couplet to connect the Great Organ and Swell together at pleasure...' (JN: 54). The registration settings for composition pedals are given for two organs. The second version of an estimate for the Independent Chapel, Gloucester (JN: 61), was to have 'three composition Pedals as under[,] 1 to take off all but the 3 Diapasons[,] 1 to put on an[d] 1 to take off Sesquialtra...' Llansilin specified the pedals to, 'Put out Princ[,] 15th and put in'. Perhaps the selection of stops for the composition pedals was a detail which might be discussed at length with clients and offered apparent options at no real cost to the builder, once the essential mechanism was purchased. Twelve of the organs were designed for enclosure in a general swell.

### **Cost:**

The cost of new organs varied widely. Some instruments made provision for future additions at the soundboard and so the initial cost *per* stop is higher. Many estimates may have verbally excluded the cost of the case. Three specifically do so and their PPSSs are £13.56 (JN: 66-67); £14.55 (JN: 81) and £12.94 (JN: 108). The latter is the cheapest in the list, apart from an instrument for Leicester, at a PPSS of £13.85 (JN: 112), sold for 'Cash'. The estimate is dated 2 April 1861 and was to be completed in just two months, by 9 June, perhaps a modest order which fitted conveniently into Nicholson's schedule. One entry, at a PPSS of £22.22, noted 'case included'. With two exceptions, the highest prices are reserved for instruments with specific casework additions - for Mr Lohr of Leicester (JN: 73), there was an option for either a 'handsome Gothic case (deal) French polished... Pipes Gilded...' at a PPSS of £17.14, or a 'case stained oak or mahogany[, with a] Gilded front...' for a PPSS of £24.00; another trade dealer in Bridgnorth (JN: 83) was offered a 'Gothic deal case, French polished' for a PPSS of £22.50; Rochester Cathedral (JN: 92-93) at a PPSS of £25, did not mention casework, but the 'best materials & workmanship...'; of two options for Westbury on Severn (JN: 94-96), the rejected estimate of a PPSS of £25, offered a 'Gothic case, [in] stained oak', against the successful submission for a larger organ at a PPSS of £14; a design for a Leicester client, possibly another dealer, offered gilding and mahogany at a PPSS of £24.15 (JN: 103) and for a PPSS of £26.25, Madresfield (JN: 115) purchased an organ in an oak case. The most expensive organ, based on these

calculations, was for St John, Bromsgrove (JN: 71-72), at a PPSS of £26.92, but casework is not mentioned. Perhaps instruments destined for dealers' showrooms were always en-cased to a high standard and the price marked up accordingly. It is also possible that casework was contracted out (as frequently happens today) and many woodworking firms were close to Nicholson's works in Palace Yard. The average PPSS, based on the prices available for new organs, was £18.86.<sup>lxviii</sup>

#### THE PIECE-WORK NOTES:

Six un-numbered pages of notes are buried in the blank pages towards the back of the Notebook. These are considered in chapter 8.

#### THE LETTER AND THE NOTE:

Inside the Notebook are two, loose pages. The first is a letter:

41. Lawrence Sherriff St., Rugby.  
Sept. 8th 1861.

To Mr. Nicholson.

Sir,

I shd. much wish you to send me a design & an estimate for a small Organ about the Size of the last one only let it be a C organ. If I can possibly keep them waiting till you can do it[,] I will, for being near Rugby it would just suit you for the [mov?]ing and I think would lead to another Organ also. It will be the gift of the Rector[.] I shd. say therefor that the money would be paid as soon as it is put up as far as I can judge. The design for the Organ would be Gothic. not an expensive case for it is not wished to be a large organ or an expensive one -

Open diapason  
Dulciana or Flute  
Stop Diap.  
Principal  
Fifteenth or Reed

Bourdon pedals to be an Octave lower than keys-could there be two Octaves of Pedals & of course a general Swell. Can you do me the above for eighty pounds. Trusting to hear from you very soon.

I am very truly  
E.S. Lawrence

Please let me hear from you without delay for the Gentleman is going out for 2 weeks & wishes it decided before he goes.

As with Mr Lohr of Leicester (1858, JN: 73) and the Musical Repository, Market Buildings, Bridgnorth (JN: 83),<sup>lxix</sup> Nicholson appeared happy to supply the retail music trade or work through an agent. It may be that he obtained the contract for St James the Less, Westminster, by such means, as the relevant entry (JN: 108) tersely records that 'carriage [was] to be paid by the party who gave the order...' and, in his turn, he was happy to supply a Bryceson barrel organ to Knighton-on-Teme (1869 or, possibly, 1859, JN: 96). Although it is possible that this was old, part-exchanged stock.

The second records a:

Specification and estimate for repairing the chapel Organ[.]

The whole of the pipes to be taken out[,] cleaned, repaired, revoiced and tuned-£12[.]

The Great Organ Soundboard to be taken out, and the valves releathered[.]

Swell Door's [*sic*] reclothed and refitted.

New Coupler pins. Bellow's [*sic*] and bellow's [*sic*] handle to be put in good repair from £8 to £10 extra[.]

The whole of the work to be done if possible for £20, [to £]lxx and in any case[,] not to exceed £22<sup>lxxi</sup> including all expenses[.]

[signed] John Nicholson

Worcester Jany. 15th 1861

To Thomas Baylis Esq

Could this draft letter relate to other contracts mentioned in the Notebook entries for 1861? It refers to little more than a general cleaning, but see 'Lemster Chapel', mentioned in SB2: WP, 1861, as a possible location.

In the future, more correspondence *from* John Nicholson *to* customers can be expected to appear, but unless they stray from commercial matters into personal discourse, something the record has not shown to date, they are unlikely to shed more light on his business or personality. Any material which emerges *from customers* may paint a more revealing picture, as the letter from Rugby shows.

- 
- 1 A thorough search for early, nineteenth-century watermark sources was not fruitful. Information on the origins of the paper might clarify the route by which the notebook came into John Nicholson's hands. The earliest publication by Bielby & Knotts, Birmingham, discovered by this writer, is 1817.
  - 1 MS L3/1: Thomas Nicholson. The parish has Ouseley associations.
  - 1 See chapter 4 for a more detailed explanation of the family. John of Bradford is recorded as an organ builder, perhaps not full-time, by 1830 (Elvin 1986: 25).
  - 1 Father of Joshua, later of Leek.
  - 1 Smith 1984: 52-3.
  - 1 JN: 51-116.
  - 1 JN: 51, St Swithun, Worcester (28 August 1843), the first estimate recorded.
  - 1 These are added after the page numbers in brackets.
  - 1 'Page 1' is written again on the first page of the 'Jones Piece Work' accounts.
  - 1 White 1837, I: 459.
  - 1 MS B2/8, inscribed, *Elliot and Hill Partnership Account*, dated 4 July 1829. It has an alphabetical index at the front and the covers are similarly bound and lined out in pencil, but with only 68 pages, 184 mm. horizontally x 231mm. vertically x 15 mm. thick. Despite its title, it contains more notes than accounts. Perhaps most working notebooks of the day were of similar appearance.
  - 1 Thistlethwaite 1990: 56.
  - 1 MS W3/2.
  - 1 WC 11 June 1845: 2 and WC 25 June 1845: 2.
  - 1 WC 17 September 1845: 5, advertisement.
  - 1 The enlargement of the interesting instruments for Malvern Priory and Sudeley Castle followed.
  - 1 Bridgnorth, John Serreli, Musical Repository, but see the John Nicholson gazetteer, for a GG organ for Madresfield Court (1867), though probably a removal of an earlier instrument.
  - 1 St Mary and St Nicholas, Chetwode, is a particularly good example.
  - 1 Derived from thirty-six quotations, at an average total of £678.88 each.
  - 1 Some of the other contact names may have been agents, rather than church officials.
  - 1 Originally £27, but the last digit has been changed.
  - 1 Again, changed from another, now, indecipherable number.

The making of an English organ builder:  
John Nicholson of Worcester, formation life and work

**A3 JN NOTEBOOK: KEY TO REPRODUCTIONS**

The John Nicholson Notebook, deposited in the Worcestershire Archive and Archaeology Service, The Hive, Sawmill Walk, The Butts, Worcester WR1 3PD (previously the Hereford and Worcester Record Office, St Helen's, Worcester). 850, St Andrew BA4426/30.

These images are reproduced by permission of the Diocese of Worcester, Diocesan Registrar, Stuart C. Ness and photographed by John France, Senior Archival Photographer, Worcestershire Archive and Archaeology Service, The Hive, Sawmill Walk, The Butts, Worcester WR1 3PD; [www.explorethepast.co.uk](http://www.explorethepast.co.uk). My thanks to both.

**Building estimate sample:** The first 27 pages of JN are dated 15 September 1830 to 14 February 1833 and concern building estimates. Here an un-numbered sample page: *verso*: Building estimate for repairs to a stable for Mr Brookes, Foregate Street. 5 February 1833. *recto*: To sink a cellar for Mr Whiting, umbrella manufacturer, High Street, 14 February 1833.

**Organ estimates:** the left-hand column offers the (un-numbered) pages in the Notebook, used in the main text for citations. Additional numbers in brackets are those added to the pages by John Nicholson. See A1 JN for full summary of page contents.

- 33) St Swithin's Church, Worcester. 28 August 1843.
- 34) Newent Church, Glos. 22 September 1843.
- 35) Studley Church [near Alcester, Warws.]. 23 September 1843.
- 36) St. Swithin's Church, Worcester. 12 April 1844. Enlargement, a cheaper estimate.
- 37) Mr. Fowler, Kidderminster [Worcs]. Estimate for a new 'finger organ'. 26 April 1844.
- 38) No heading, un-dated specification for a small organ, no price. An option for JN: 55, above?
- 39) Winchcomb [sic, Glos]. New organ in the old case. 5 August 1844.
- 40) Independent Chapel, Gloucester. For 'enlarging and improving...'. 1 October 1844.
- 41) St Paul's Church, Wolverhampton [Staffs]. 'To enlarge and improve the organ.' 3 October 1844.
- 42) Mr Bernard's organ, Leamington [Warws] n.d. Rebuild, some old pipework.
- 42-3) Independent Chapel, Gloucester. Enlargement. 5 November 1844.
- 43) continuation of above.
- 44) Mr. Woodward, Cheltenham [Glos]. Supplying some pipes. 1 February 1845.
- 46) Revd Mr J. Jebb, Chesterfield [Derbys]. New. October 1845.
- 46) Revd Hastings, Areley Kings, Stourport [Worcs.]. New. October [1845?].

- 47) blank and a break of seven years.
- 48-9) Mr E. Lechmere, Hanley Church [Worc]. New. 25 April 1853.
- 50-1) C. Morris, North Malvern [Worcs]. New. 24 April 1853.
- 52) Mr. Parr, Redditch [Worcs]. June 1853. New. Note a five-year break in the entries.
- 53) (1) Bromsgrove Church [Worcs]. New. October 1858.
- 54) continuation of above.
- 55) (2 and 3.) G.A. Lohr, Leicester. Two alternative new organs. The first 22 October 1858, the second 16 November 1858.
- 56) (4) Charles Merryweather, Leicester. New. 12 May 1858.
- 57) (5) Revd P. Freeman, Thorverton, Cullompton, Devon. Two alternative estimates. 3 November 1858.
- 58) (6) H. Wale, Belvoir Street, Leicester. New 'chamber organ'. 4 November 1858.
- 59) (7) J.J. Corbett, Rock House, Cinderford, Glos. New. 7 April 1858.
- 60) (8) Mitton Church organ [Worcs]. Alterations and additions, 'completed about 20th of Sept. 1858.'
- 61) (9) Mr. M. Irving, Architectural Carver, 45 Queen Street, Leicester. Two alternative, new organs. N.d.
- 62) (10) H. Wale, Leicester. New. Small practice organ. 16 November [1858?].
- 63) (11) 'Continued', another version. New. 28 September 1858.
- 64) (12) Mr Freeman, St Pauls, Worcester. Enlargement. 'Sent' 16 November 1858.
- 65) (13) John Serreli, Musical Repository, Market Buildings, Bridgnorth [Shrops]. New. N.d.
- 66) Revd E.H. Niblett, Redmarley Rectory, Newent [Glos]. New. 20 November 1858.
- 67) Llansilin [St Silin?], near Oswestry, Denbigh [Wales, but part in Shrops]. New. 16 February 1858.
- 68) (No. 3.) Revd John Lander, Donnington Rectory, Ledbury, Herefs. New. 5 December 1859.
- 69) Revd E. Jacson [sic], Thruyton Rectory [Herefs.]. New. 'Completed in Kingstone Church April 20th 1859.'
- 69) Revd Gerald Blunt, Crewe Green, Crewe, Staffs. New. July [1859?].
- 70) T.C. Hornyold, Hanley Catholic Chapel [Worcs]. Overhaul. 27 June 1859.
- 71-3) three blank pages.
- 74-5) J. Hopkins, Cathedral Precinct, Rochester [Kent]. New. 1859.
- 76-8) Revd C.J. Jones, Vicarage, Westbury on Severn, Glos. Two alternative schemes. 25 April 1859.
- 78) continuation of above. Also, Revd W.R. Davies, Knighton-on-Teme, Tenbury. Sale of Bryceson

- Barrel Organ. 1 July 1869 (sic, 1859? or see below).
- 79) St Thomas's Church, Dudley [Worcs.]. Alterations and additions. Page heading only. N.d.
- 80-1) Revd C.T. Heartley, Oldwood, organ for Queens' College, Cambridge. New. 17 October 1859.
- 82) F. James Bellamy, 16 St Owens Street, Hereford. New. 29 November 1859.
- 83) A. Graham Clarke Jnr., Frocester, Stonehouse, Glos. New. 7 December 1859.
- 84) Revd W.M. Champion, Queens' College, Cambridge. New. 3 January 1860.
- 85) W.C. Barrows, 23 New Walk, Leicester. New. 7 November 1859.
- 86) (Page 3.) Revd C.J. Dale, Holt Rectory [Worcs.]. New. [Late 1859-61]
- 87) (4.) Manchester Cathedral [Lancs.]. New. N.d.
- 88-9) continuation of above.
- 90) Miss Emily Monk, St James the less Church, Upper Garden Street, Westminster, London. New. 29 September 1860.
- 91) St Mark's Church, Torquay [Devon]. New. 29 September 1860.
- 92) continuation of above.
- 93) Revd G. Halls, Clent Vicarage, near Stourbridge [Worcs]. Rebuild. 1 March 1861.
- 94) Revd J. Lomas, 6 New Town Street, Leicester. New. 'To be completed June 9th 1861'.
- 95) Revd A. Kent, Coln St Aldwyn, Fairford, Glos. New. 18 July 1861.
- 96) T.G. Curtler, Barbourne Church, Worcester. New. 15 August 1861.
- 97) Revd G.S. Munn, Madresfield, near Malvern [Worcs.]. New. 28 August 1861.
- 98) Cuddesdon Church, Oxon. Revd H.H. Swinny, Wargrave Rectory, Henley on Thames. New.

The remaining pages are blank until the piece-work notes.

**Loose items:** The volume contains three loose pages, comprising two letters:

Loose item 1) From E.S. Lawrence to John Nicholson, 41 Sherriff St, Rugby, 8 September 1861.

Loose item 2) continuation of above.

Loose item 3) Specification and estimate for repairing the chapel Organ. From John Nicholson to Thomas Baylis. 15 January 1861.

**Piecework notes:** Six pages of notes and accounts relating to piece work. They are dated from 15 February 1862 to 13 January 1863 and show a simple creditor's account for a wooden-pipe maker named Jones.

Piecework 1) 15 February 1862 to 23 August 1862.

Piecework 2) September 1862 to 6 December 1862.

Piecework 3) 20 December 1862 to 14 March 1863.

\*

*Edited transcription © James Berrow, March 1995. Not to be used without acknowledgement*

---

1 MS W3/1 abbreviated to JN.

1 Elsewhere I have used 'Swithun' to follow the usage of the building's present trustees.

1 The first reference to composition pedals.

1 Patrons, the dean and chapter of Worcester Cathedral (*Clergy list* 1841: (214)).

1 WC 3 January 1843: 3, Mr Fowler, bookseller, offered a house organ for sale in January 1843. It was in a mahogany case, had ten stops and was 'put in complete repair by Flight and Robson within the last three years...' and cost 'upwards of 100 Guineas.' The price asked was £45.

1 Unsuccessful estimate. Sperling II: 113, n.d., Cellini. 'Built by Cellini for Tardebig [*sic*] in Warwickshire [*sic*] the seat of the Earl of Plymouth / removed to this church in 1790 - originally one row of keys GG to D in alt. Enlarged by Willis in 1844 and a Swell added by Hill in 1852. *Clergy list* 1841: (209), patron Lord Sudeley. See Burke 1859: 962-5, Thomas-Charles Hanbury Tracy of Toddington, born 1801, Lord-lieutenant of Montgomeryshire.

1 *Clergy list* 1841: 213, is this Bilston, near Wolverhampton?

1 *Clergy list* 1841: (26), patrons, the dean and chapter of Lincoln. *Clergy list* 1851, the Revd J.B. Jebb was curate of St Thomas, Brampton, near Chesterfield, Derbys., from 1846.

1 *Clergy list* 1841: (6), the Revd Henry James Hastings, incumbent from 1831.

1 *Clergy list* 1841: (83), The Revd A.B. Lechmere, vicar of Welland (Hanley Castle) from 1828 and vicar of Hanley Castle from 1839. The patron was Sir A. Lechmere. WC 21 June 1879: 8d, report of Sir E.A.H. Lechmere, Bart, M.P. (one of two M.P.s, representing Worcester) and Ouseley attending a Gaudy together at Christ Church, Oxford. A commissioning connection? *Clergy list* 1877: (339), patron Sir E.A.H. Lechmere of Hanley Castle. Also a J. Lechmere is patron of Ludlow, Salop. See also JN: 88 footnote.

1 See also JN: 88 and the customer, a Mr Hornyold. There is a Hornyold Terrace in North Malvern (Littlebury 1879: 309).

1 Recorded 'No 1', in the same hand.

1 The first fully modern *German* instrument with a thirty-note pedalboard. £700, plus the old organ (PPSS £26.92). Was it significant that Nicholson did not list inter-manual couplers for this organ in his Notebook? With the exception of the additional stops marked \*, the specification is identical to Witley (1857).

1 Not in the 1846 directories. Kelly 1855: 70, George Augustus Lohr, professor of music, 34 Belvoir Street, Leicester. See also, page 72, Henry Nicholson, professor of music, 14 Halford Street, Leicester (White 1877: 396), A. Nicholson & Co., yarn agents, Victoria Buildings, Queen Street, Leicester. See Appendix 2.3: Humberstone.

1 No mention of pedal *pipes* in either estimate.

1 Kelly 1855: 71, Charles Merryweather, chemist and druggist, 18 High Street, Leicester.

1 *Crockford* 1860: 219, vicar of Thorverton, Collumpton, Devon, from 1858, later Principal of Chichester Theological College. Patrons of Thorverton, the dean and chapter of Exeter.

1 Kelly 1855: 76, Henry Wale, hosiery, manufacturer, Pocklington's Walk, Leicester and an Amos Wale, hairdresser, Russell Square, Leicester. White 1877: 391, H. Wale, 25 Belvoir Street, Leicester. White 1877: 487, Henry Wale, hosiery manufacturer, 25 Belvoir Street and Lower Brown Street Mills, Leicester; home 'Harborough'.

1 The latter facility survives at St John, Mount Bures.

1 Not found in 1846, 1855 or 1877 Leicester directories. But at Victoria Buildings, Queen Street, Leicester, an A. Nicholson & Co., yarn agents (White 1877: 396). See Gazetteer 3: Humberstone.

1 Might this have related to the provision of a case for the instrument in JN: 76 above? See 'Without a case', in JN: 81.

1 *Clergy list* 1861: (190), rector, Redmarley D'Abitot from 1853.

1 Different from JN: 52, above.

- 1 *Clergy list* 1861: (70), incumbent from 1845.
- 1 *Clergy list* 1861: (227), incumbent from 1858, following the Revd H. Wetherell, instituted in 1799! Patron, the bishop. Jacson was the brother-in-law of the Revd Thomas Bulkeley-Owen of All Saints, Shrewsbury, a friend of Ouseley.
- 1 *Clergy list* 1861: (15) and (62), the Revd Abel Gerald Wilson Blunt, was rector of St Luke's, Chelsea, Midd., and domestic chaplain to Lord Crewe, who was patron of Crewe Green parish church. The incumbent, from 1860, was the Revd J. Ellerton. St Michael's was built by G.G. Scott, 1857-8, Pevsner 1971: 191-2.
- 1 Littlebury 1879: 603, Thomas Charles Gandolfi Hornyold, J.P., D.L., of Blackmore Park. Note that Hanley Castle (house) is the property of Sir Edmund A.H. Lechmere, Bart., M.P. See JN: 66-7.
- 1 MS W1/1: 18, notes that Done was appointed organist of Worcester Cathedral, in Bishop Murray's time. Murray, besides being Bishop of Rochester held the living of Bromsgrove as well as the deanery of Worcester.
- 1 Does this indicate a stopped rank?
- 1 The *Clergy list* 1861 confirms that the Revd Christopher C. Jones was incumbent from 1858. The patrons were the Custos and College of Vicars Choral in Hereford Cathedral.
- 1 The *Clergy list* 1861 confirms that he was incumbent from 1844.
- 1 *Clergy list* 1861: 145, the Revd Chas. Tebbott Heartley was curate of St Michael's, Tenbury, Worcs., and *Clergy list* 1851: 122, curate of Kemerton, near Tewkesbury, Glos. (See Gazetteer 3 and SB2: WP, n.d.) *Clergy list* 1877: (175) 'Old Wood' is a reference to the estate at Tenbury on which St Michael's College was built. *Cantab.*, part 2, volume III: 311, admitted pensioner of Queens', 17 May 1845. He 'migrated' to St Catherine's when he came up to Cambridge. Eventually became headmaster of St Michael's College, Tenbury, 1856-61; then of Swansea Grammar School, 1861-78. Rector of Cheveley Cambs., 1878 to his death in 1894.
- 1 *Clergy list* 1877: (361), a T.W. Trouncer of Shrewsbury was patron of Mickleover, Derbys.
- 1 Recorded 'Page 1' in the same hand.
- 1 White 1877: 391, William Charles Barrows, 23 New Walk, Leicester, no profession. In White 1846: 124, a Wm. Barrow, brickmaker of Stanley Street, Leicester.
- 1 *Clergy list* 1861: (109), incumbent, with Little Witley, from 1847, patron the Earl of Dudley.
- 1 Kelly 1846: 377, Mrs Emily Monk, milliner, 20 Broadley Terrace, Blandford Square. Pevsner and Harris 1973, I: 491-2, the church built by Street, 1860-1, 'at the expense of the Misses Monk in a poor neighbourhood and says *Illustrated London News*, 'rises as a lily among weeds'. Location given as Thorndike Street, Vauxhall Bridge Road. *Clergy list* 1861: (146), rector, the Revd J.E. Kempe, from 1853.
- 1 Note, *Cantab.*, IV: 16, John Edward Kempe of Bromley, Kent, rector of St James', Piccadilly (1853- 95), died 1907. Note the Kempe family of the west country. *Oxon.*, ser 2, parts 1-2: 785, the Revd George Henry Kempe of St Mabyn, Cornwall, rector of Bicton, Devon from 1845; his son, the Revd George Henry Kempe of Budleigh Salterton, rector of Farnborough, Somerset (1877-82) and vicar of St James', Croydon (1882-?) and the Revd John Kempe of St Tudy, Cornwall, vicar of Fowey 1818, until his death in 1863.
- 1 *Clergy list* 1861: (55), incumbent from 1860.
- 1 Not in 1846 directories. *Clergy list* 1861: (237), a Revd John Lomas was incumbent of Holy Trinity, Walton-on-the-Hill, Liverpool, from 1846. A Lancashire connection, around the time of the Manchester Cathedral commission?
- 1 *Clergy list* 1861: (58), the Revd Alfred Kent, vicar from 1853.
- 1 *Clergy list* 1867: 86, the Revd Thomas Gale Curtler, incumbent of St Stephen, Barbourne, Worcester. SB2: WP, 1862 2<sup>3</sup>/<sub>8</sub>". WC 21 August 1862: 2e, report of the consecration of the new church, with organ. II/16/2, C-Swell c<sup>0</sup>-f<sup>1</sup>-g<sup>3</sup>. A Great Sesquialtra; Pedal stop an Open Diapason only. Radiating and concave pedalboard. Mr J. Caldicott, assistant organist of the cathedral appointed organist.
- 1 *Crockford* 1891: 939, George Shaw Munn, rector of Madresfield from 1856.
- 1 The proximity of the church to the then Bishop's Palace may have offered commercial benefits, given the influential visitors.
- 1 *Clergy list* 1861: 299, the Revd Hy. Hutchinson Swinny, Principal of Cuddesdon Theological College. He was also rector of Wargrave.
- 1 According to Mr K. Randall, organist of All Saints', Cuddesdon, Oxfordshire, in conversation, October 1993, the Nicholson instrument was sited against the east wall of the north transept, with the player facing east. It was removed before the Second World War
- 1 This is the final entry for an organ, over seventeen years after the notebook was started by Nicholson in August 1843. Unlike the Colne St Aldwyn instrument (JN: 113), Cuddesdon had a pedal board of 'two octaves & 3rd'. As an extra £5 is charged for 'Pedals 1 third higher', the first compass mentioned must be C to d<sup>1</sup>, with the next '3rd' taking it to the full compass of f<sup>1</sup>, a 'third' meaning three semitones.
- 1 Originally £17, but over-written £20.
- 1 Changed from an illegible number.



The making of an English organ builder:  
John Nicholson of Worcester, formation life and work

1032	Mr. Brookes's Estimate		£	s	d
Nov	Brought forward		259	13	8
11 <sup>th</sup>	4 Oak sink grate frames 1/4 ea		"	6	4
			260	"	"
	fronted pieces not be included		2	"	"
	Estimate given in	£	258	0	0
	Houses not built				
1033	Estimate for repairs of a stable				
	At for Mr. Barnaby, Turgate Street				
Feb 3 <sup>rd</sup>	Given in to Mr. Watkins Plasterer				
	14 ft 6 in Run of oak manger 1 1/2 in				
	130 ft 6 in front & back oak top rail				
	37 1/2 not including posts or hoops 2/6	1	16	3	
	30 ft 1/2 Elm boarding re-halved and beaded				
	between cratch and manger not				
	Including spars ----- at 6 1/2	"	16	3	
	14 ft Oak sills under table fixed - 2	"	9	4	
	20 1/2 Oak back staves - 6	"	10	"	
	Make taking down old work				
	shutting &c	"	0	2	
	Estimate as given in to Mr. Watkins	£	44	0	0

1833  
 Feb 14<sup>th</sup> Estimate to Mr Whiting  
 Umbrella Manufacturer

High Street To sink a cellar in  
 Parlor under build walls of <sup>do</sup> concrete  
 and make a passage under Hall & sink  
 and put up brick steps outside lay  
 cellar and passage floors with build bricks  
 Take down chimney breast make  
 good flagging &c

1 Rod 252 feet 14 in thick water at 9 <sup>th</sup> to 10 <sup>th</sup> Road	17	5	"
26 y <sup>d</sup> flooring common bricks 4/6	1	19	"
91 y <sup>d</sup> Excavation whelled out - 6	2	5	6
putting down flagging &c	"	10	6
To be done by Mr Atkins	£	22	0 0

For Me as Estimate  
 Carpenter & Joiner work

Centering for passage	1	10	"
Props maces and propping wedges	2	"	"
Taking up flooring relaying and making good parlor floor	1	13	6
2 inch bed geed doors and frames	2	5	"
Brail and ballusters to cellar steps landing	10	"	"
Out to common 13 long 10 x 8 " 4/ -	1	10	-
2 thumb lathe pieces	"	1	6
Cellar Window frame & brass in oil	"	7	"
Making good stutty matts &c	"	3	2
	£	10	" "

Work commenced upon on 18<sup>th</sup> Feb  
 at 10 estimate

1843 An Estimate for Enlarging and  
Aug 18<sup>th</sup> Improving the Organ of St. Bartholomew's Church  
Worcester

A New Swell on the Venetian plan  
Compass from Tenor C to F in alto <sup>Stop</sup> #2

Stop 1 Open Diapason

Do 2 Stop Diapason

Do 3 Principal

Do 4 Flute

Do 5 Flutboy

Couplet to connect the Great Organ and  
Swell together An Octave Couplet to connect  
the Pedals and Great Organ together With  
an Octave and half of Pedals with fifteen  
Separate Pedal pipes on a large Scale  
A new Set of Great Organ Keys with  
New Bellows with double action on a large  
Scale with Concession Valves to Steady  
the Wind Total number of new pipes 210  
W For the sum of 80 0 0

John Nicholson

Worcester Aug 28<sup>th</sup> 1843

To the Rev B Sargeant Rector  
Red Hill

The above will make your Organ a very  
complete and effective Instrument

1843 Estimate for a New Swell for  
Sep<sup>r</sup> 22 Newent Church Organ Gloucestershire  
Organ Compass from tenor F to F  
in alto 37 Keys

Stop 1 Open Diapason

Do 2 Principal

Do 3 Hautboy

Room upon the Sound Board for a  
Stop Diapason and Reed Stop or Flute  
A New<sup>st</sup> Swell Keys from F to F 37 in Number  
Complete to connect the Great Organ  
and Swell together at pleasure

For the Sum of £ 33 0 0  
Trumpet 5

1843 Estimate of an Organ for Trinity Church  
Sept 23<sup>rd</sup> on the German Scale Compass  
of the Key Board from C<sup>b</sup> C to F<sup>b</sup>  
66 Keys the Lower Octave to act  
upon the Bourdon,  
Compass of the Great Organ from C<sup>b</sup>  
to F<sup>b</sup> 54 Notes

- 1 Open Diapason Through in Metal
- 2 Stop Diapason Do in Wood
- 3 Principal Do in Metal
- 4 Twelfth Do in Metal
- 5 Fifteenth Do in Metal

Compass of the Swell from Tenor  
C<sup>b</sup> to F<sup>b</sup> 2 Keys on the Venetian plan

- 1 Open Diapason
- 2 Stop Diapason
- 3 Principal
- 4 Hautboy

With an Octave of Bourdon pipes  
to C<sup>b</sup> C. an Octave and half of  
Pedals - Octave Couplet from Pedal  
to Great - Composition Pedals to  
Change the Stops Couplet to  
connect the Swell and Great Organ  
together With a deal Case painted,  
the front Pipes to speak & gilded  
the Bellows on a large Scale with  
double action all to be of the best  
Materials and Workmanship subject  
to any competent person for the  
Sum of £ 170 0 0

An Estimate for enlarging and improving  
the Organ of St. Swithun's Church, Worcester.  
A new Swell on the Penitential plan, Compass  
being from Fiv Alto down to tenor C, 42 Notes

Stop 1 - Open Diapason

2 - Bourdon

3 - Stop Diapason

4 - Principal

5 - Fifteenth or Wald flute

6 - Hautboy

Complet to connect the Great Organ  
and Swell together at pleasure -

With an Octave and half of German  
Pedals to take down the Stops of the  
Great Organ, New Bellows on a large

Scale with Double Action Concussion  
valves to Steady the Wind for the

Sum of 66 Pounds

John Nicholson

April 12<sup>th</sup> 1844

An Estimate for a finger Organ  
Compass being from F in alto down to G  
58 Notes containing the following Stops  
Great Organ

- Stops 1 Open Diapason in Metal
- " 2 Soft do Bass in Wood
- " 3 do do in Treble
- " 4 Wald. Flute Wood open pipes
- " 5 Principal in Metal
- " 6 Fifteenth in Metal

Swell on the Venetian plan from F to F<sup>3</sup>rd

Stop 7 Open Diapason

" 8 Soft do

" 9 Principal

" 10 Flautboy

11 Couplet

With a Painted deal case Grained oak  
for the sum of 120 £

J. Nicholson

To Mr. Fowler Thiderminster

April 26<sup>th</sup> 1844

Great Organ

Stop 1 Open Diapason in Metal

2 Stopt do in Wood

3 do Treble

4 Principal in Metal

5 Fifteenth do

6 Open Diapason

7 Principal

8 Hautboy

9 Couplet to connect the Great organ  
and Swell Room on the sound board for two  
stops more with composition pedals



Winchcomb

Estimate for a New inside  
Stop on Dia throughout

2 Stop Dia Bass

3 Stop Dia Treble

4 Sulland to Cornet 4

5 Wald Flute

6 Principal

7 Twelfth

8 Fifteenth

9 Cornet

10 Sesa 3 Ranks

Octave & half of Pedals. - The case  
not included. Sum of 100 Guineas

Repairing the present Organ  
New Bellows, New Metal on Dia  
Lower octave as Pedal pipes New  
Keys and action sound board to  
be rebalud. Octave on half of  
Pedals put in good repair for  
the sum of 50 Pounds

Aug 5<sup>th</sup> 1844

1844

Set 1 Estimate for enlarging and improving  
the Independent Chapel Gloucester

The organ to have new Bellows  
on a large scale, a new sound Board  
and action to the Keys, new draw  
stops, also a new Open Diapason to  
be in Metal 8 feet, the 4 lowest notes  
in wood open piped, the present Open  
to be enlarged. - With and octave & half  
of German pedals,

The sound Board to admit the following  
stops. 1. Op Diapason. 2. Open to swell  
6. 3. 4th Bass. 4. 4th Treble. 5. Dul-  
to fiddle 6. 6 Prm. 7-12. 8-15. 9  
Sesquialtra. 10. Swantroy to sw 6  
for the sum of 42 " "  
Swantroy extra 6

1844  
Oct 3

I hereby agree to enlarge and  
improve the organ in St Pauls  
Church. Wolverhampton &  
seven new double Open Suspension  
Pedal pipes all 16 feet sound board  
and action, & four upon the  
sound board for Prin & Fif Bass  
Ped allred in all new Rowler  
Board & action, Ped coupler  
new Cremona fed G. Flute  
to be removed in the swell  
The organ to be cleaned tune  
Sum of — — — — — 41  
H. H. and Co. in Principle 2.





The Organ to contain the following

- Stops
- 1 Open Diapason Bass
  - 2 do do Treble
  - 3 Open Diapason
  - 4 Stop do Bass
  - 5 Stop do Treble
  - 6 Dulciana
  - 7 Principal
  - 8 Twelfth
  - 9 Fifteenth
  - 10 Sesquialtra & Cornet
  - 11 Flautboy to tenor C. 42 Pipes

The whole to be of the best Materials & Workmanship for the Sum of £ 54 - -

And to be kept in good tune and repair for the Sum of £ 9 - - per Annum

November 5<sup>th</sup> 1844

1845  
Feb 1

Mr Woodward Cheltenham  
7 Dulciana pipes from tenor C  
to fiddle G. voiced - - - £ 1 15  
Gg and a stop Diapason 2 " "

1845  
Oct

Rev<sup>d</sup> M. J. Jebb, Chesterfield

44 Organ with oak case  
open Diapason to Tenor C

Ouliana do

Stop Diapason Bass

Stop Diapason Treble

Principal

Fifteenth

Octave and half of Pedals.

Sum of 75 Guineas.

£	s	d
78	15	0

Oct Rev<sup>d</sup> Hattings Only King's Transport

44 Organ deal case Painted oak

open diapasons & E Metal rest stop

Ouliana to Tenor C

Stop Bass

do Treble

Principal

Fifteenth

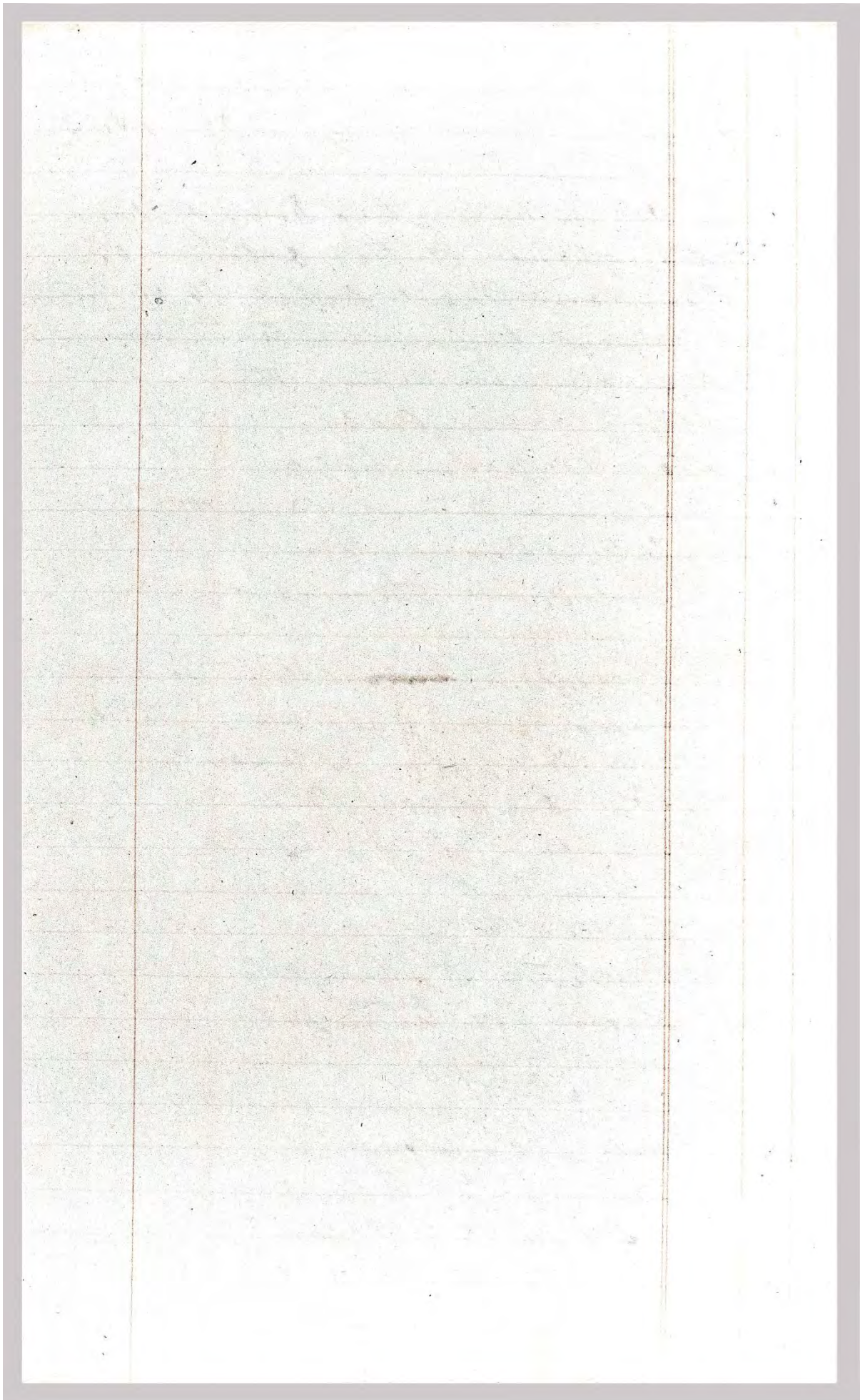
Octave and half of Pedals

Shawbby Tenor C

Twelfth and the whole of  
the organ inclosed in a shell

80	"	"
8	"	"
10	"	"





Mr. E. Lechner's Estimate for  
Hanley Church, April 25 - 1853.

An Organ having two rows of Keys  
throughout, & two octaves of  
Bourdon Pedal pipes - 16 ft. Pitch

- Stops Great Organ C to G
- 1 Open Swaps on Mutual thro
  - 2 Stop Swaps on Bass
  - 3 Stop Swaps on Treble
  - 4 Dulciana to tenor C - & Percussion through
  - 5 Flute Room for
  - 6 Principal through

Swell to ~~tenor~~ C to G & H

- 7 Bourdon, two last Octaves on Pedal,
- 8 Open Swaps on tenor C
- 9 Stop Swaps on Bass
- 10 Cornet
- 11 Principal
- 12 Fifteenth
- 13 Extract 3 Ranks
- 14 Room for trumpet

Coupler

- 15 Pedal Bourdon
- 16 Swell to Great
- 17 Swell to Pedal
- 18 Great to Pedal

for the sum of 150 Guineas  
Bellows on a large scale  
to supply 16 feet opening 5 Guineas  
extra. Total 155 Guineas

If trumpet be added 20 Guineas  
furny + expens. 5-

If flute be added £10-10-0  
expens extra - -

The above sum does not  
include a Case -

C Morris Edg North Malcolm  
One & half of Pedals Three Composition  
Pedals. April 26 - 1853.

Gr. Organ C to G

- 1 Open Scapaton throughout
- 2 Dulciana to tenor c
- 3 Stop Scapaton Bass
- 4 Stop Scapaton Treble
- 5 Principal
- 6 Fifteenth
- 7 Preparation for flute
- 8 Preparation for trumpet

Small to tenor c to G

- 9 Bourdon
- 10 Open Scapaton
- 11 Stop Scapaton
- 12 Principal
- 13 Fifteenth
- 14 Flute
- 15 Room for a Cornopium or trumpet
- 16 One octave of Pedal Bourdons 16 feet  
Couplers
- 17 Small to Great
- 18 Great to Pedals

The Metal, <sup>piece</sup> in front and ends  
to be sent and gilded, long  
Movement including all  
expenses for the sum of 150  
Guineas - Warranted, and if  
not approved to be exchanged  
~~if not approved~~ for a new  
one -

1853

June

Mr. Parr - Pidditch  
Open Diapason tenor C  
Gamba to tenor c.  
Stop Diapason Bass  
Stop Diapason Alto  
Principal  
Fifteenth

The whole enclosed in  
a General Small  
octave & half of German  
Pedals -

Blow by Hand or Foot.  
Has composition ready

compare G. G. to J.

No 1 Bromsgrove Church Organ Oct 1858.  
Three Rows of Keys Throughout C to G  
Great Organ

CC to G. 5 to Keys

1. Open Diapason Large
2. Open Diapason Small
3. Stop Diapason Bass
4. Clarabella Treble
5. Principal
6. Wald Flute
7. Snell 7th
8. Fifteenth
9. Mixture 3 ranks
10. Trumpet Preparation

Choir Organ CC to G

11. Open Diapason Treble
12. Dulciana Tenor C
13. Viol di Gamba tenor C
14. Stop Bass
15. Stop Diapason Treble
16. Dulcet
17. Flute
18. Cremona.

Snell Organ CC to G.

19. Bourdon Bass
20. Dulciana Double
21. Open Diapason
22. Stop Diapason
23. Principal
24. Flute.

- 25 Piccolo  
 26 Doublette  
 27 Oboe  
 28 Cornopeau  
 Pedal Organ - CCC to least 3000  
 29 Open Diapason 16ft  
 30 Bourdon 16ft  
 31 Preparation for Reed  
 Couplers /  
 32 Great to Pedals  
 33 Snek to Pedals  
 34 Choir to Pedals  
 3 Stoppendos Pedals  
 for the Feet

For the Sum of £700 and the Old Organ.



Estimate sent to G. A. Lohr by

2 Oct 22<sup>nd</sup> 1858 Leicester

Compass CC to G of 56 notes

- No 1
1. Bourdon one octave left tone
  2. Open Diapason tenor
  3. Dulciana or Viol di Gamba
  4. Stop Diapason Bass
  5. - - - - - Treble
  6. Principal
  7. Flute
  8. Fifteenth

10 octaves of German Pedals  
3 composition Pedals

General Inlet handsome Gothic  
case (deal) French polished with  
Metal Front Pipes Gilded

The whole to be of the best materials  
for the sum of £ 120

3 G. A. Lohr Leicester Nov 16-1858

CC to G

- No 2
1. Bourdon Bass 1 left tone
  2. Double Diapason treble
  3. Open Diapason Tenor C
  4. Stop Diapason Bass
  5. - - - - - Treble
  6. Principal Bass
  7. - - - - - Treble
  8. Hautboy tenor C

2 sets of pedals General Inlet. Front and side  
blower, case stained oak or Mahogany. Gilded  
front Metal Pipes. Pedals and Keys to  
slide in & out at pleasure £ 120

40

Charles Merryweather Leicester

May 12<sup>th</sup> 1858.

Compass C to G 56 notes

- 1. Open Diapason 56
  - 2. Dulciana 44
  - 3. Stop Diapason Treble 56
  - 4. Stop Diapason Bass
  - 5. Principal
  - 6. Snell 16
  - 7. Fifteenth
  - 8. Sesquialtra
  - 9. Preparation for Trumpet  
Snell Tenor C to G 44 notes
  - 10. Bourdon
  - 11. Open Diapason
  - 12. Stop Diapason
  - 13. Principal
  - 14. Doublette
  - 15. Cornopean
  - 16. Gamba  
Couplers
  - 17. Snell to Great
  - 18. Great to Pedals  
Pedal Organ C C to C 16 ft
  - 19. Grand Open Diapason 16 ft
- Deal case stained oak for  
3 composition Pedals for the
- Sum  $\begin{array}{r} 1330 \\ 220 \end{array}$

5 Rev<sup>d</sup> J. Freeman Thornton  
Cullompton Devonshire  
No 1. Compass C to F 54 Keys

- No 1. Open Diapason Tenor C
2. Stop Diapason Bass
3. — — — — — Treble
4. Principal

For the sum of £50  
Front Pipes to form a screen  
in place of the upper part  
of case work.

- No 2. Compass C to G. 56 Keys
1. Bourdon 16ft one octave
  2. Open Diapason tenor C
  3. Viol di Gamba
  4. Stop Diapason Bass
  5. — — — — — Treble
  6. Principal
  7. Fifteenth
  8. Bass

one octave and half of German  
Pedals two composition Pedals  
General Swell. Oak Case  
Stained Oak with metal Front  
Pipes for the sum of £120

Nov 3<sup>rd</sup> 1858.

6. 4. Male Org. Below Streat  
Leicester

No 2.

- Chamber Organ  
Compass C<sup>1</sup> to G<sup>5</sup> Keys  
1. 1 Octave of 16ft tone Bourdons  
2. Open Diapason  
3. Viol di Gamba  
4. Stop Diapason Bass  
5. — — — — — Treble  
6. Principal  
7. Wald Stute.  
8. Fifteenth  
1 1/2 octaves of German Pedals  
2 composition Pedals. Grand  
Swell.

French polished also Metal front  
pipes.

The Keys and Pedals to slide  
in and out at pleasure  
Height of case 9 ft 6 in for  
the sum of

100 Guineas

Nov 24<sup>th</sup> 1858 Nicholson

Nov 9/58 1 extra Comp: Pedal added making 3 alto.  
getter ————— 2 2  
Extra German Pedals and Bourdons  
Pipes making 2 octaves instead 1 1/2 8 8  
Diapering front Pipes about 10 10  
Making in all the total sum of 120 sum.

7

J. J. Corbett Esq. Rock House Cinderford  
Gloucestershire

One Row of Keys Throughout

Compass CC to G 56 notes

1. Open Diapason
2. Dulciana
3. Stop Diapason Bass
4. Stop Diapason Treble
5. Principal
6. 15<sup>th</sup>
7. Oboe

General Snell.

Separate Pedals Organ two Octaves  
CC to C. 8. (16 ft Tone) Pedal Board

9. Couplers manuals to  
Pedals at Pleasure.

Three Composition Pedals  
for the sum of 1<sup>5</sup>/<sub>0</sub>

Sent April 7<sup>th</sup> 1858

8 Specifications for Alterations  
& Additions to be made to Witter  
Church Organ.

1 octave and 1/2 of new genuine  
Pedals, new backfall & Rowler  
Board, also new Pedal Coupler  
New Rowlers from Pedals to  
Pedal Pipes. The Organ to be  
cleaned & tuned for £20  
including all expenses.

Has Completed about 28<sup>th</sup>  
of Sept 1858.

July 1858.

Wm

9 - M<sup>r</sup> M. Irving  
Architectural Carver  
45 Queen Street  
Leicester

No 1

Specification

Compass CC to F. 54 Keys

1. Bourdon one octave 16ft Four
2. Open Diapason
3. Dulciana
4. Stop Bass
5. Stop Treble
6. Principal
7. Fifteenth
8. Oboe to Tenor C

1/2 Octaves of German Pedals  
Gothic deal case stained oak  
for 120

Enclosed in a General Frame

No 2

CC to F 54 Keys

1. Open Diapason
2. Stop Bass
3. — — Treble
4. Principal
5. 13<sup>th</sup>

Deal Case & Comp: Pedals  
for 60

10 H. Wale Leicester Nov 16<sup>th</sup>  
No 3 Great or Small Organ

CC to G, 56 Keys

1. Open Diapason Throughout
2. Stop Diapason - -
3. Prin -
4. 15<sup>th</sup> or Piccolo
5. Cornopean or Boe Senore

Choir Organ

CC to G, 56 Keys

6. Stop Diapason Bass
7. Clarabella Treble
8. Viol di Gamba
9. Wald Flute.

10 Separate Pedal Organ CC to G 20 Pipes  
Couters

11. Choir to Great
12. Great to Pedals

3 Composition Pedals

Metal Front Pipes.

Plain deal case. French

Polished. Similar to W. Perinton

14. Trebles of best spotted metal

ex. should prefer the Clarabella  
in G. O. Stop Treble in Choir

160



11

Continued Was sent Sep 28 - 1855.

Great or Choir Organ

CC to G 5 C notes

No 1

1. Open Diapason Metal Thru
2. Dulciana tenor C
3. Stop Diapason Bass
4. Stop " Treble
5. Principal
6. Wald Flute or Fifteenth

Swell Organ

Tenor C to G 4, 4 Keys

7. Bourdon.
8. Open Diapason
9. Stop Diapason
10. Principal
11. Cornopean.

Pedal Organ CCC to G 20 notes

12. Bourdon 16 ft tone

Couplers

13. Great to Pedals
14. Swell to Great

3 Comp: Pedals  
without a case

£ 160

12 M<sup>r</sup> Freeman St Pauls Worcester  
Sent Nov 16<sup>th</sup> 1838

no 1.

New Small Organ  
Linn C to J & B Keys

1. Bourdon	4 3
2. Open Diapason	4 3
3. Stop Diapason	4 2
4. Principal	4 2
5. 15 <sup>th</sup>	4 2
6. Cornopean	4 2

---

Pedal Organ CCC to G 20 pipes  
7. Bourdon 16ft tone

Coasters  
8. Small to Great  
9. Great to Pedals

New bellows on a large scale  
with double action for the sum  
of £ 90

13

John Senck.

Musical Repository  
Market Buildings  
Bridgwater

G.C. to G. 60 Keys

1. Open Diapason Tenor C
2. Keranophon to Tenor C
3. Stops Bass
4. - - - Treble
5. Principal Throughout

13 Octaves of German Pedals  
Gothic deal case. French  
polished for the sum of £ 90  
to blow by hand or foot

Allow 10 per cent

The Rev<sup>d</sup> H. H. Libley  
Redmarley Rectory

(<sup>no</sup>) Rent

Gloucestershire

Compass C to F 5 1/2 Keys

1. Open Diapason throughout
2. Dulciana
3. Stop Diapason Bass
4. Stop Diapason Treble
5. Principal
6. Gold Plate
7. Fifteenth } Preparation for
8. Mixture }

1/2 ~~ozs~~ of German Pedals

2 Composition Pedals

For the Sum of 100 Guineas

April or May 1859 to complete  
the instrument 20 Nov 62

Leeds June 1885

Hausilia Church

1700 Darnestry

Wropshire

Compass case of 56 Keys

1. Bourdon 16ft. Four ecc. 1 octavo
2. Open Diapason
3. Stop Diapason Bass
4. Stop Diapason Treble
5. Dulciana
6. Principal
7. Fifteenth
8. Flue.

1/2 doz of German Pedals

1 Comp. Pedals. General Grets  
Deal Case stained oak  
Metal front Pipes for £ 120

Carriage not included

Burkley case used through speak

Comp. Put out Price 15<sup>th</sup> and put in

Completed.

July 16<sup>th</sup> 1885.

No 3

Estimates for 1859  
Rev. John Leader  
Connington Rectory  
Ledbury

Compass C to F 54 Keys

1. Open Diapason
2. Stop Diapason Bass
3. Principal Metal Treble
4. Preparation for Fifteenth
5. Stop Diapason Treble

Room left for General Bricks  
Two Composition Pedals  
1 octave of German Pedals  
Deal case & metal front plates

Dec 5<sup>th</sup> 1859 Accepted £50

5 ft 8 in wide

4 ft 6 in or 9 ft high

3 ft deep

1858.

Rev. E. Jackson  
Throughton Rectory  
Hereford

Compass CC to F 54 - Keys

1. Open Diapason Throughout
2. Stop Diapason Ditto
3. Principal

Case same as Design  
Use of Best materials

July 1858. £ 80.

Completed in Kingstons Church  
April 20<sup>th</sup> 1859.

Cresc Green Cresc Staffordshire  
Rev. Gerald Bham

CC to G 56 Notes

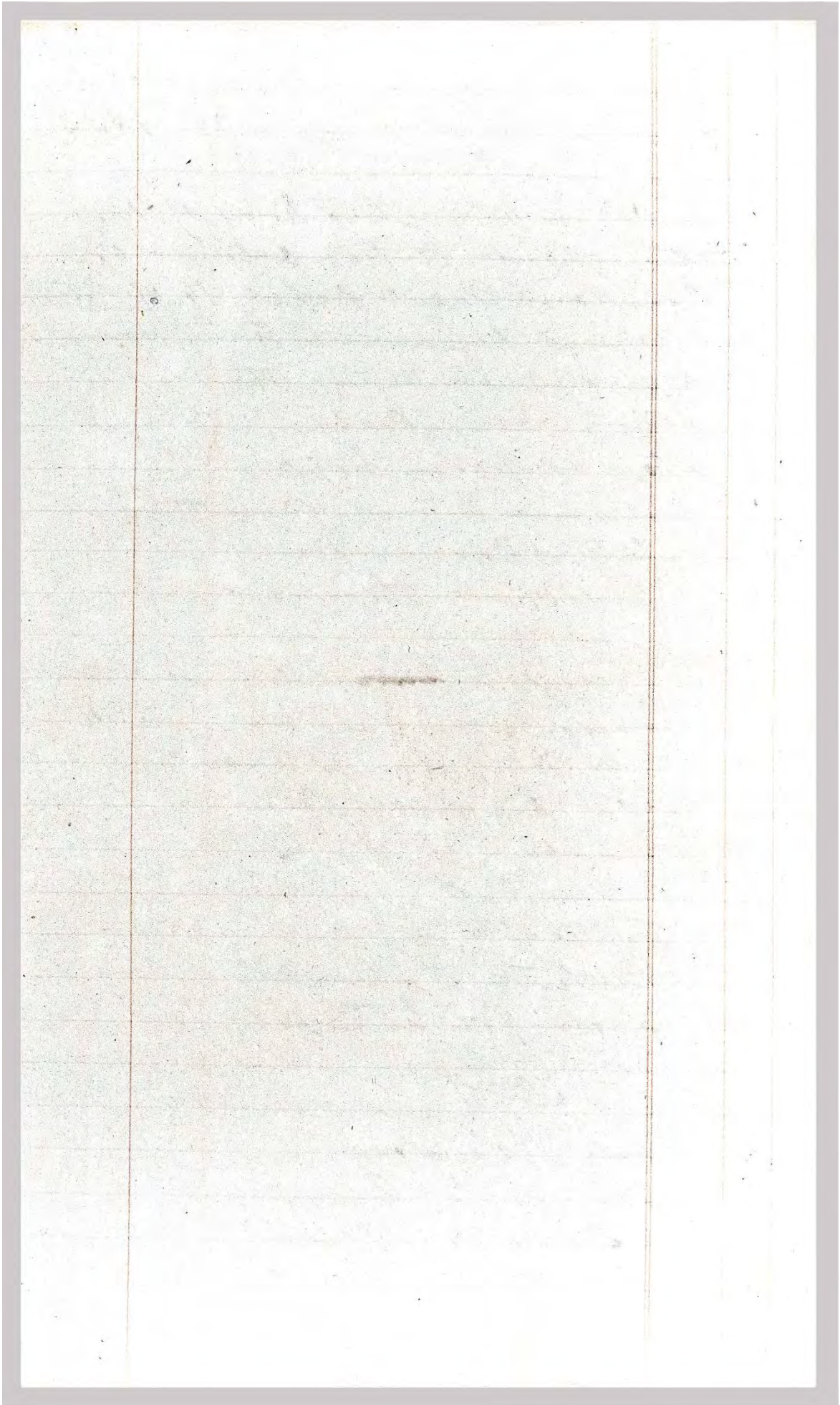
1. Open Diapason
2. Stop Diapason Bass
3. ————— Treble or Dul
4. Principal
5. 78<sup>th</sup>

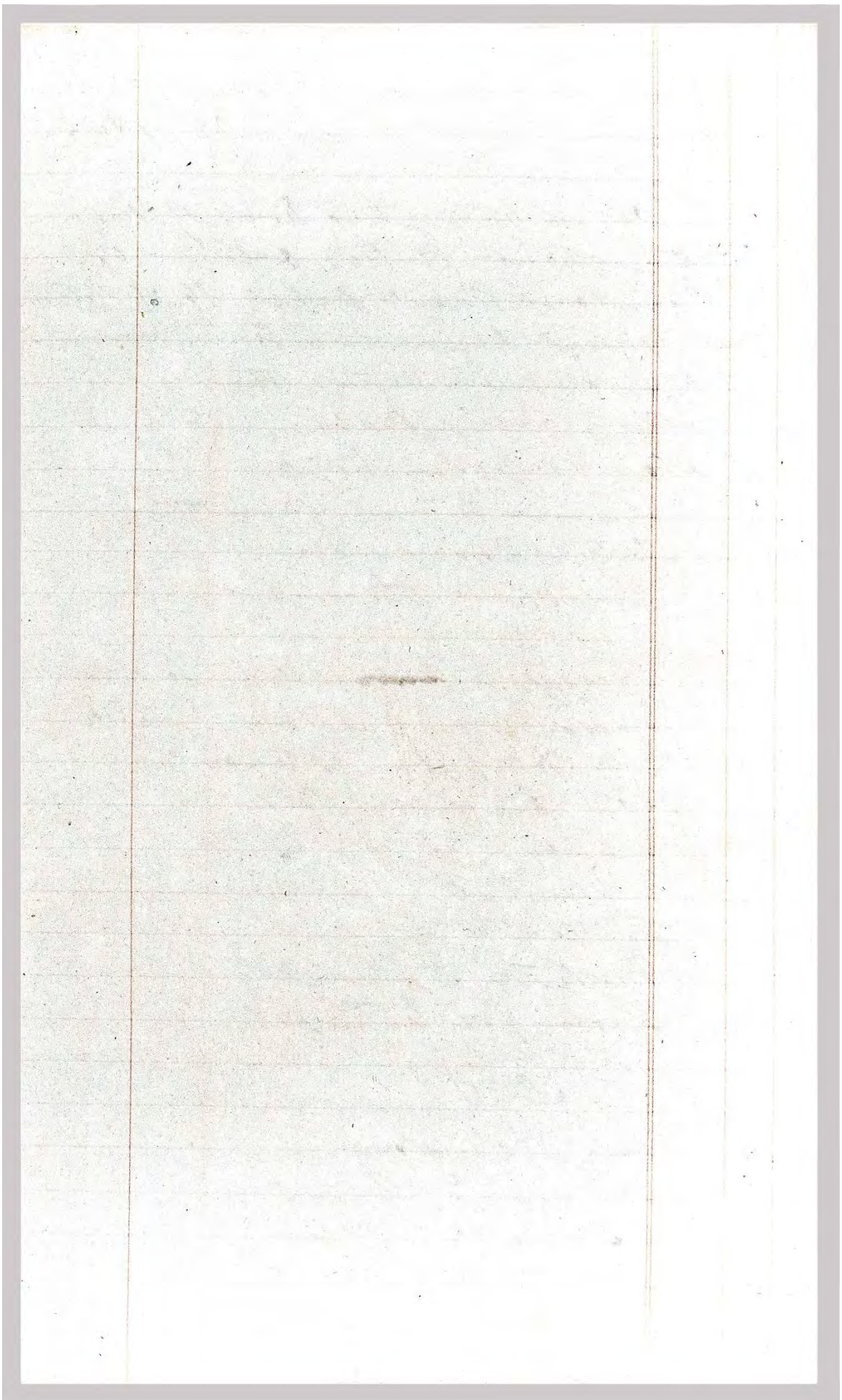
Design sent for Colquhoun

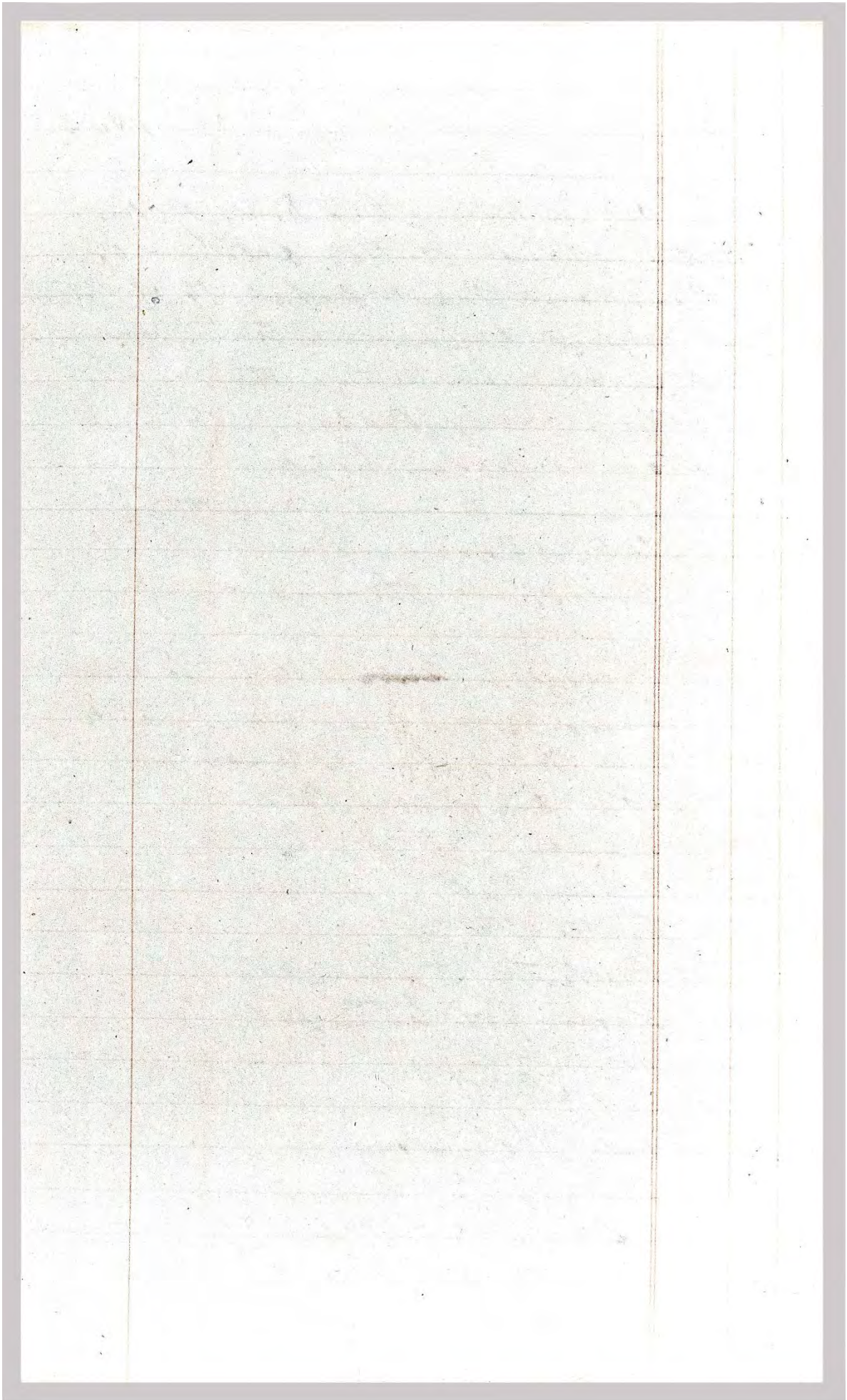
J. C. Horngold. Esq  
Hauley Catholic Chapel  
Two octaves of Pedals  
Two foes of Bourdons  
New valves to Bellows  
Cleaned tuned & put  
in good repair for \$40 - -

June 27<sup>th</sup> 1859.  
order given.









Estimated List 1859  
 J. Hopkins  
 Cathedral Precincts  
 Rochester

3 Complete Manuals  
 Great Organ cctd G. 56

1. Open Diapason	8ft	56
2. Viol di Gamba tenor C.	8ft	44
lowest octave grooved from Open Diap.		
3. Goldflute	8ft	56
4. Principal	4ft	56
5. Fifteenth	2ft	56

Small Organ

6. Bourdon 16ft tone		56
7. Horn Diapason tenor C		44
8. Rohrflute	8ft tone	56
9. Spitzflute	4ft tone	56
10. Mixture	3 ranks	114
11. Horn	8ft	56
12. Hautboy tenor C	8ft	44
13. Clarion	4ft	56

Choir Organ

14. Dulciana tenor C	8ft	44
grooved to stop Diapason		
15. Stop Diapason	8ft	56
16. Gemshorn	4ft	56
17. Flute Metab Treble		56
18. Clarinet tenor C	8ft	44

Pedal Organ cect to E  
19. Subbass 16ft 29 1/2  
20. Violoncello 8ft 29-

Couplers

1. Snell to Great
2. Choir to Great
3. Great to Pedals
4. Snell to Pedals
5. Choir to Pedals

Four Comp: Pedals 2 to Gt 2 to Snell  
Deal Case Stained oak  
All Trebles of Spotted Metals  
Concession Valves to each Organ  
Best Materials & Workmanship  
for the sum of  
£500

Estimated Sent April 25<sup>th</sup> 1859

To Rev. C. J. Jones

Worcester

Westbury, on Severn

Gloucestershire

No 1 One Row of Keys Compass  
C to G 56 notes

1. Bordow one octave 10<sup>th</sup> tone
2. Open Diapason
3. Stop Diapason Bass
4. Stop Diapason Treble
5. Dulciana or Viol. di Gamba
7. Fifteenth
8. Oboe to tenor C

one <sup>ped</sup> and a half of German  
Pedals. Three Composition Pedals  
to Change the Stops at pleasure  
Gothic Case Stained oak  
with Metal Front Pipes.

Enclosed in a general Full  
Concussion valve to steady  
the wind with every modern  
improvement and warranted  
for the sum of £120

J. Nicholson

accepted-

No 2 • Estimate for an organ having  
2 complete sets of Keys throughout  
from Cc to G. 56 keys in each set  
the lowest octave of Small Keys  
to have command of the 16ft Ped Board

Great Organ Cc to G 56 notes

1. Open Diapason Metal this
2. Stop Diapason bass
3. - - - - Treble
4. Dulciana
5. Principal
6. Fifteenth or Wald Flute
7. Fifteenth
8. Sesquialtra 3 ranks
9. Preparation for Trumpet

Small Organ Tenor to G 44 notes

10. Bourdon 16ft tone
11. Open Diapason
12. Stop Diapason
13. Viol di Gamba
14. Principal
15. Fifteenth
16. Cornopean

Pedal Organ Ccc to C 28 notes

17. Bourdons 16ft tone large scale  
Couplers
18. Great to Pedals
19. Small to Great

Three Composition Pedals

7

Continued

Two Octaves of German Pedals  
Concassiva Caloes to each by an  
Large Bellows with double action  
and every modern improvement  
for the sum of 200 guineas

Accepted  
June 24<sup>th</sup> 1859

Nicholson

Bryceson's Barrel by an sold  
to Res<sup>d</sup> H. R. Davies  
Knights-on-Lane  
St. Jembury.

£  
200. 00

Accepted  
July 2<sup>nd</sup> 1859



*Alterations and Additions to  
St Thomas's Church Dudley*

1

Specification for an Organ to  
Contain the following Stops 2 Rows  
of Keys

- Great Organ CC to G 56 notes
1. Open Diapason Metal third 8 ft tone
  2. Clarabella and Stop Bass 8 ft
  3. Dulciana to Tenor & lowest  
octaves grooved into Stop Bass 8 ft
  4. Flute Stopped Wood 4 ft
  5. Principal Metal 4 ft
  6. Fifteenth Metal 2 ft
  7. Mixture 4 Ranks 2 <sup>2</sup>/<sub>3</sub>

Small Organ Furo C. with one  
octave of Stop pipes to complete the  
Manual to C.

1. Stopped Diapason 8 ft
2. Spitzflute 8 ft
3. Gemshorn 4 ft
4. Hautboy 8 ft

- Pedal Organ CCC to E 29 notes
1. Bourdon Bass 16 ft tone
  2. Open Diapason 16 ft tone
  3. Spare Slider

Couplers

1. Small to Great
2. Great to Pedals

Continued

Three Compositio Pedals to Great Organ, Concussion Valves to each Organ Large Bellows with double action all the treble pipes to be of best spotted Metal. The Instrument to be built of the best seasoned materials and Workmanship.

To be erected including all expenses carriage &c for the Sum of £ 250 - -

For Queens College Cambridge.

Oct 17<sup>th</sup> 1859.

Res<sup>d</sup> E. J. Keattley  
Oldwood.

Refer to page 1  
1860-

extra, Cornopium in place of Rose  
three shells in Great  
space shells in Small  
Small full wrapped  
Complex Small to pedals

£ 270

Spotted Metals

10

Extra Carriage

3 - 10

£ 283 - 10

J. James Bellamy Esq.  
st. owner

16. ~~St. Vincent~~ Meet

Hereford - Sent Nov 29<sup>th</sup> 1859

Compass CC to G in Alto 5 Pkcs

1. Bourdon One Octave 18ft tone
2. Open Diapason
3. Viol de Gamba
4. Stop Diapason Bass
5. Stop Diapason Treble
6. Principal
7. Fifteenth
8. Sesquialtra III Ranks

Three Composition Pedals

General Mech.

Metal Front Pipes

Deal Case Stained Oak

1/2 octaves of Pedals

For £120.

Mrs. Inouces Esq.

Moorefield House

Hereford. presented it to the Chapel.

Completed. March 3<sup>rd</sup> 1860.

Subscription

Mr A. Graham Clarke Jun<sup>r</sup> Esq  
Gloucester.

Stouckhouse  
Gloucestershire

Dec 7<sup>th</sup> 1859.

Estimate for a new *String Organ*  
Church Scale to contain the following Stops  
Compass CC to F 54 Keys-

1. Open Diapason
2. Stop Diapason Bass.
3. Stop Diapason Treble
4. Principal.
5. Preparation for a Fifteenth  
or Flute

The Open and Principal Bass  
pipes to form the ornamental  
part of case (upper part)

about 12ft high  
7ft wide  
4ft 8in deep. £ 50

Page.

1

1860

The Rev<sup>d</sup> W. M. Campion  
Queens College  
Cambridge  
as decided upon Jan 3<sup>rd</sup> 1860

Great Organ cc to G 56 Notes

1. Open Diapason Metal
2. Clarabella & Stops Bass Wood
3. Viol di gamba tenor c lowest octave into S. Bass
4. Stopped Flute Throughout
5. Principal Metal.
6. Fifteenth Metal.
7. Mixture II Ranks
8. Spare Slider

Small Organ cc to G 56 Notes

1. Bourdon Stopped Throughout
2. Stopped Diapason Thro
3. Spitzflute or Open to tenor C. lowest octave
4. Gemshorn or Principal Thro
5. Piccolo - -
6. Cornopean - -

Pedal Organ CCC to E 29 Notes

7. Open Diapason 16 feet 29 Notes

Couplers

Small to Great.  
Great to Pedals  
Small to Pedals

for £ 270

Page  
2

1860

W. C. Burrows Esq  
23 New Walk.  
Leicester.

as decided upon Nov 7<sup>th</sup> 1859.

- Compass CC to G. 5 notes
1. Bourdon 1ft tone ccc to D.
  2. Dulciana tenor C Spotted Metal
  3. Viol di Gamba. - " Spotted - -
  4. Stop Diapason Bass. - - - -
  5. Stop Diapason Treble - - - -
  6. Principal Spotted.

The octavo and ~~Re~~ notes of Pedals  
Bourbons to act on the Pedals.

tenor C. CA D to act on Pedals not on the  
Keys which stop at B.

2. Composition Pedals

General Ineb

Keys and pedals to slide in case  
at pleasure

Original Contract	80	17
All spotted Metal extra	3	" "
Gilding	3	3 "
Spains to Mahogany case		
French polished	15	15 "
	<hr/>	
	102	15 "

Case from front to back out to out  
2ft 10 in.

No.  
3

The Rev. C. J. Dale.  
Holy Rectory  
(in) Worcester.

Compass CC to G.

1. Open Diapason Metal Horn
2. Stop Diapason Bass.
3. Stop Diapason Treble Metal.
4. Viol di Gamba Horn C
5. Principal Horn Metal.
6. Preparation for a Fifteenth

1½ Octaves of German Pedals to  
take down the Rezs permanent  
movement, dead case stained Oak  
metal speaking pipes from the  
upper part of case work

2 Composition Pedals

For the Organ of

F. G. S.



14 Manchester Cathedral Organ  
 3 Rows of Keys Throughout C to G.

Great Organ Compass C to G.

1.	Bourdon wood		16ff
2.	Stop Diapason	Wood	8ff
3.	Open Diapason	Metal	8ff
4.	Open Diapason	Metal	8ff
5.	Clarenetta	Wood	8ff
6.	Gamba	Metal	8ff
7.	Principal	Metal	4ff
8.	Principal	Metal	4ff
9.	Twelfth	Metal	2 $\frac{2}{3}$
10.	Fifteenth	Metal	2
11.	Seventeenth	Metal	1 $\frac{2}{3}$
12.	Eighteenth	1	1 $\frac{1}{3}$
13.	Full Mixture	No thirds	
14.	Sharp Mixture	No thirds	
15.	Trumpet		8ff
16.	Claron		4ff

Small Organ Compass C to G

1.	Bourdon & Dulciana	Metal	8ff
	remainder in Bourdon	Wood	16ff
2.	Open Diapason	Metal	
3.	Viol di Gamba	Metal	7 more 8ff
4.	Bourdon	Wood	8ff
5.	Octave	Metal	4ff
6.	Sweet Flute	Wood	4ff
7.	Super Octave	Metal	2ff
8.	Terzquarta	17-19-22	Metal

~~Choir Organ. Compass C to G~~  
Small Organ Continued.

- 9 Hautbois Metal 8ft
- 10 Trumpet Metal 8ft
- 11 Clarion Metal 4ft

Choir Organ C to G.

- 1 Viol de Gamba Tenor C lowest 8ft  
Octave grooved into Stop Diapason
- 2 Stop Diapason Wood 8ft
- 3 Dulciana Metal 8ft
- 4 Clarabella Metal 8ft
- 5 Gamba Octave Metal 4ft
- 6 Stopped Flute Lowest Octave Wood 4ft
- 7 Piccolo Wood Open 2ft
- 8 Krumhorn Metal 8ft
- 9 Grand Spichlide on a high pressure-  
wind with a separate soundboard to  
protrude horizontally over the screen of  
the second arch.

Pedal Organ. Organ  
C C to F 30 notes.

- 1 Principal Wood 16ft
- 2 Violon Small Scale 16ft
- 3 Octave Metal 8ft
- 4 Trombone Wood 16ft
- 5 Bourdon Stopped Wood 16ft

Couplers-

1. Swell to Great Organ
2. Choir to Swell Organ.
3. Pedals to Great Organ
4. Pedals to Swell Organ
5. Pedals to Choir Organ -
- 6.

3 Composition Pedals acting upon  
the Great and pedal organs together  
3. Composition Pedals to Swell Organ  
In and out Pedal for Pedals to Great Organ  
In and out for Swell & Pedal Organ  
Large bellows with double action also  
a second pair of bellows for the Pedal  
organ with high pressure wind  
Compression valves  
Pneumatic Lever.

For the Sum of £ 875.

In addition to the foregoing contract  
Swell to Choir and Solo Mute on the  
high pressure wind is added at a cost  
of £ 25 with some little other additions

Order  
from

by Miss Emily Monk.

Sep 29<sup>th</sup> 1860.

for St James the Less Church

Upper Garden Street

Westminster

London.

Great Organ C to G 56 Keys

- 1. Open Diapason in Metal 56 pipes
- 2. Dulciana Tenor C. 44
- 3. Stop Diapason Bass 56
- 4. Clarabella Treble
- 5. Principal Metal 56
- 6. Fifteenth Metal 56
- 7. Seventeenth Metal 56
- 8. Sesquialtra Branks Metal 56

Small Organ C to G 44 Keys

- 9. Bourdon Wood 44
- 10. Open Diapason 44
- 11. Stop Diapason 44
- 12. Principal 44
- 13. Stop Flute 44
- 14. Piccolo 44
- 15. Cornopean 44

Pedal Organ C to G two Octaves

- 16. Pedal Open Diapason 16 ft 25
- 17. Small to Great
- 18. Great to Pedals 3 compass: Pedals

To be erected and complete for £ 220

Case done. Carriage to be paid by the

Party who gave the order.

completed & opened July 31<sup>st</sup> 1861

Organs for St Marks Church Jorquay -  
 E. W. Whinfield Esq.  
 Kendal Villa  
 Jorquay.

The Rev. R. Eogg. Incumbent to St Woods - Committee  
 Great Organ. CC to G 5th Notes.

	1	Open Diapason	Metal Thro:	8 ft
44	2	Slide for Stop Diapason		8 ft
	3	Gamba to Gamba Gf.	Metal	8
	4	Wald Flute or Clarabella	Woods Gamba	8
	5	Principal	Metal	4
44		Slide for Flute Wood Stopped		4
	7	Twelfth	Metal	2 $\frac{2}{3}$
	8	Fifteenth	Metal	2
	9	Mixture 3 ranks	Metal.	
44	10	Sliders for Trumpet Thro Reed		8

Small Organ CC to G 5th Notes.

	11	Double Diapason & Bourdon		16 ft
	12	Open Diapason	Metal Gamba rest wood	8
44	13	Slide for Stopped Diapason		
	14	Dalciano	Gamba. F. Metal	8
	15	Principal	Metal	4
	16	Mixture	4 ranks Metal	
	17	Coruspeaw.	Metal	8
44	18	Sliders for Cremona. or Oboe Reed		8.

Choir cc to G. Stenotes

- |   |                       |      |
|---|-----------------------|------|
| 19. Spitz fluke                         | Metal                 | 8    |
| 20 Stop Diapason                        | Metal to Lewis & Wood | 8    |
| 21 Slits for Viol di Gamba              | Gun                   | 8    |
| 22 Gemshorn.                            |                       | 4    |
| 23 Slits for Crenous                    | Through out           | 8    |
| Pedal Organ cc to G. Radiating Clavacoe |                       |      |
| 24 Sattast.                             | Wood Spew.            | 16/8 |
| 25 Bourdon                              | Wood stopped.         | 16/8 |

Couplers.

- 26 Great to Pedals
- 27 Choir to Pedals
- 28 Treble to Pedals
- 29 Treble to Great
- 30 Treble to Choir

Concession values to each Manual Organ  
 3 Comp: to Great Organ, Case included. Carriage  
 and also expenses for the sum of  
 £400 to be paid  
 when complete in the Church of St Mark's  
 Freeway. Rev. A. Hogg - Incumbent  
 Mr. Olding Clerk.

Stops marked in Red also not inserted  
 for the above sum.

Opened Oct 15<sup>th</sup> 1861.  
 Garrison at Opening

The Rectory, Halls

Great Vicarage

Stourbridge -

Specification & Estimate for repairing & improving  
the Church Organ -

The Organ to have New Bellows feeders  
also New handle & Action -

A new Venetian Swell to the whole  
of the Organ and new Swell pedal the  
Metal and Wood pipes throughout the  
Organ to be put in good repair, revoiced  
and lined -

The Draw Stop action to be made free  
and easy -

The finger Keys to be made stationary -  
also New action to Keys -

The Organ to be removed from the Church  
to Worcester & vice versa and erected  
in the Church including Carriage  
and all expenses -

In addition the Keys & draw stops  
to be removed from front of Organ to  
side leaving room in front for Singers  
for £ 56

Worcester

March 1<sup>st</sup> 1861

Letted May 24<sup>th</sup> 1861

The Rev. J. Lomas.  
 to New Inn Street.  
 Leicester

Great Organ. Cc to F. 54

- |                             |        |    |
|-----------------------------|--------|----|
| 1. Open Diapason            | Thro   | 54 |
| 2. Stool di Gruta.          | Jeux C | 42 |
| 3. Stopped Diapason         | Wood   | 12 |
| 4. Stopped Diapason         | Wood   | 42 |
| 5. Principal                | Thro   |    |
| 6. Stopped Flute            | Jeux C |    |
| 7. Swelfth                  | H      |    |
| 8. Fifteenth                |        |    |
| 9. Preparation for Sequenza |        |    |
- Small Organ Jeux C 42

- |                            |        |        |       |
|----------------------------|--------|--------|-------|
| 1. Bourdon                 | Wood   | Closed | Thro  |
| 2. Open Diapason           | Open   |        | Thro  |
| 3. Stopped Diapason        | Closed |        | Thro  |
| 4. Principal               | Open   |        | Thro  |
| 5. Piccolo preparation for |        |        | Thro. |
| 6. Cornopean.              | Open   |        | Thro. |

Pedal Organ Cc to ~~F~~ 1/2 Octaves  
 18 notes

- |            |        |       |
|------------|--------|-------|
| 1. Bourdon | Closed | Wood. |
|------------|--------|-------|

Couplers

Small to Great.

Great to Pedals.

3 composition Pedals. to Gb Organ

all tubes best spotted Metal.

For the sum of £180 April 2<sup>nd</sup> 1861.

To be complete June 9<sup>th</sup> 1861. Cash



The Rev. A. Keat.

Col. St Aldmyns

Fairford

Gloucestershire

Compass CC to G. 56 notes

1. Bourdon 16ft tone One octave
2. Open Diapason Metal
3. Stop Diapason Bass Wood
4. Stop Diapason Treble Wood
5. Viol di Gamba Metal
6. Flute Wood
7. Principal Metal
8. Preparation Sledge

13 octaves of German Pedals

Three composition Pedals

General Incls for the Law of  
£105

Sent & accepted July 10<sup>th</sup> 1861

J. G. Carter Esq  
 Bartons Chavels  
 Worcester.

Great Organ CO to G 56 notes

1	Open Diapason	8ff	56
2	Pulsina	8ff	56
3	Stop Diapason Bass	8ff	52
4	Stop Diapason Treble	8ff	44
5	Principal	4ff	56
6	Stopped Flute	4ff	56
7	Fifteenth	8ff	56

8. Preparation for Jesquialtra 37 notes

Small Organ - Tenor C to G 44 notes

9	Bourdon	Wood	18ff	44
10	Open Diapason	Metal	8ff	44
11	Stopped Diapason	Wood	8ff	44
12	Viol di Gamba	Metal	8ff	44
13	Principal	Metal	4ff	44
14	Piccolo	Wood	2ff	44
15	Cornopean	Metal	8ff	44

Pedal Organ 200 to C 25 notes.

16	Open Diapason wood	18ff	25
----	--------------------	------	----

Couplers.

17. Great to Pedals

18. Small to Great

3 Coup: Pedals to Great Organ

Bellows with double action Concussion Baby

Pipes of spotted Metal for the Saw of £250

Worcester July 20<sup>th</sup> 1861

New Cap 15<sup>th</sup> 1861 - by J. G. Carter Esq

The Rev<sup>d</sup> G. S. Mann  
Madresfield  
(W) Malvern

Compass C<sup>o</sup> to J. S. H. Notes

1	Open Diapason	Metal W <sup>o</sup>	54 8/11
2	Stop Diapason Bass		13 8/11
3	Stop Diapason Treble		42 8/11
4	Salciana		42 8/11
5	Principal		54 4/11
6	Preparation for Claps		42 4/11
7	Preparation for 15 <sup>th</sup>		54 4/11

oak case. Metal front speaking pipes as  
per tracing. Bellows with double action  
to blow by hand or foot.

Concussion valves to steady the wind  
In Composition Pedals. Best materials &c  
For the sum of £105

Sent Aug 15<sup>th</sup> 1861  
Given 20<sup>th</sup> 1861. By Rev<sup>d</sup> G. S. Mann as per letter  
of that date.

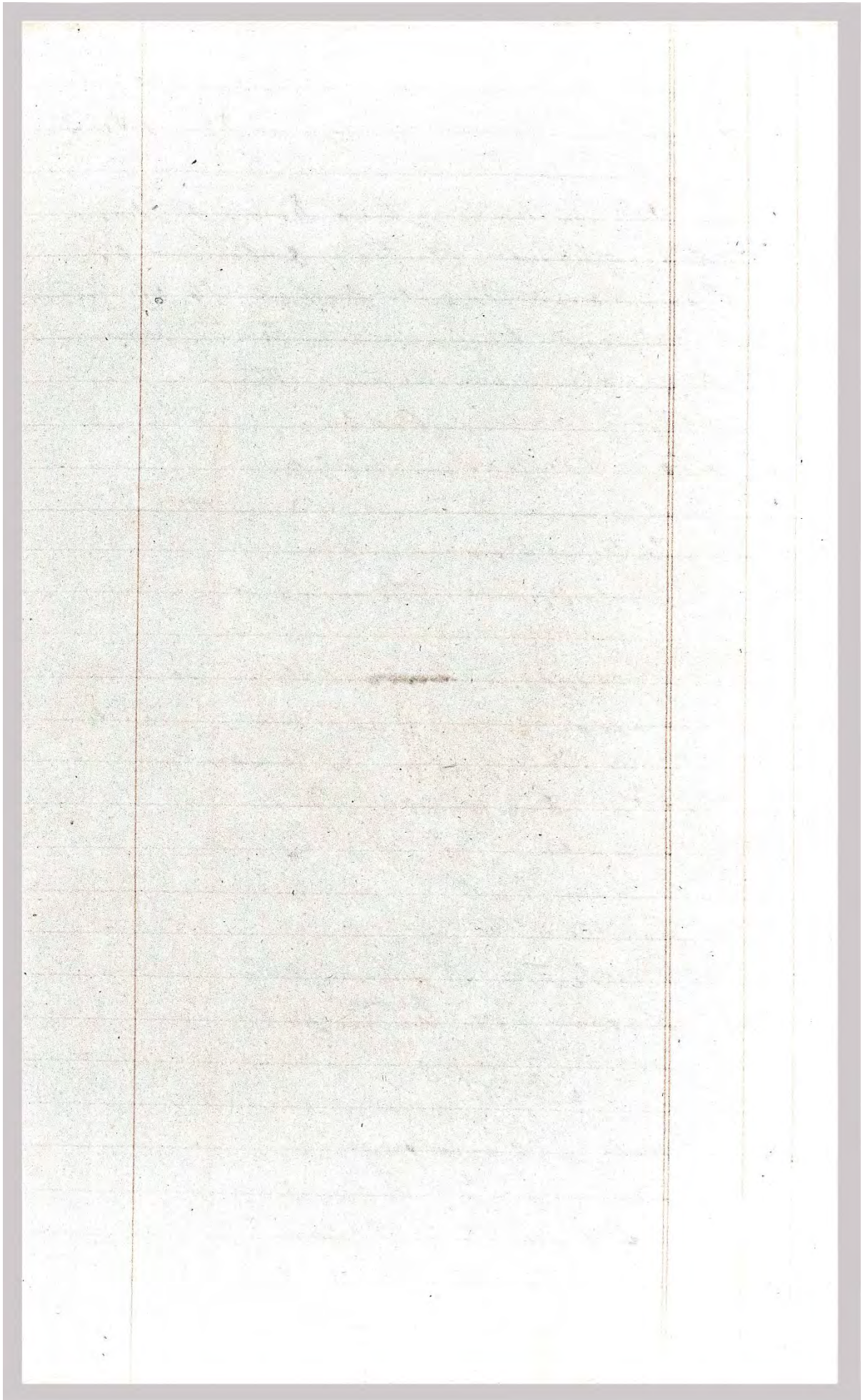
Cuddesdon Church

of or

Revd. A. H. Orwin  
 Wargrave Rectory  
 Beuley on Thames

Compass. Cc to F 54 Keys		
1. Open Diapason	Metal Thro	54
2. Dulciana	Sound C	12
3. Stop Diapason	Bass	12
4. Stop Diapason	Treble	12
5. Principal	Metal Thro	54
6. Flute	Wood Tho	54
7. Fifteenth		54
8. Pedal Coupler		
9		
Two octaves to 3 <sup>rd</sup> of 16ft tone Boarders		
Two - - - - - of German Pedals		
3 Composition Pedals		
Expense of reversed Key board	£ 15	15
Pedals 1 third higher		5
Price of Organ		130
		<hr/>
		£ 140

Order given June 22<sup>nd</sup> 1864.  
 Work complete Nov 10<sup>th</sup> 1864.  
 Wm.



1862 Jones Piece Work

Feb 15 Two st trebles	1	4	"
v Two stopped flutes tenor C.	1	10	"
March 15 Two stop Bass flute.	1	"	"
June 1 Oct. st Bass Musling		19	
v Oct tenor C. G. O. Musling		10	
v do Swell		10	
v Swell Brandon Musling		19	
v 13 pipes Bed Brandon Musling		19	10
Two stop trebles Barbourn & Musling	1	4	-
v Swell Brandon 12 pipes Barbourn		19	"
v G. O. Stop diapason 12 pipes Barbourn		19	-
v Stop Sw. Sw. 12 pipes Barbourn		10	
v Tenor C Stop G. O. Barbourn		10	
Two stop trebles	1	4	-
Sept. 1. Two stop trebles	1	4	
	<hr/>	<hr/>	<hr/>
	1	14	1 10

1862		Cash on A/c.	£	"	"
Feb	5	Amount forward.	1	7	7
	8	Cash	1	"	"
	15	Cash	1	2	"
	22	Cash		18	2
March	1	Cash	1	"	1
	8	Cash		15	1
	15	Cash		15	2
May		Cash		10	8
June	7	Cash	1	2	"
	14	Cash	1	2	
	21	Cash	1	2	
	28	Cash	1	2	
July	5	Cash		14	
	12	Cash	1	"	"
	19	Cash	1	2	
	26	Cash		12	6
Aug	9	Cash		4	10
	16	Cash	1	2	-
	23	Cash	1		
			<hr/>		
			17	12	1

1862

Jones Price Book.

F

Sopr. Two Piccolo	1	4	"
Two octaves top flutes		6	"
cc to B. 12 stop Sax		19	
cc to B. 24 stop Sheffington	1	9	-
one octave tenor c stop Sheffington		10	-
Sopr Bourdon vents		5	3
cc to B. 12 stop Sents		19	
cc to B. 12 Ped. Sents		19	
Two Octaves Clarabella flutes 24		6	
one octave tenor C 12 stop Swell Sents		10	
do. do G. O. Sents		10	
Two stop trebles	1	4	
cc to B. 12 stop G. O. Sents		19	
cc to B. 12 Swell Bourdon's Sents		19	
Swell Bourdon's tenor c to B. Sents		10	
do. do do Pettway		10	
6 Ped Bourdon's Sents		5	
Two stop trebles	1	4	
one octave stopped flutes Sents		10	
one octave stopped flute Pettway		10	
		14	8-3
brought forward		14	1 10
	F	28	10 1



1862

Cash on A/c

Aug 30

Sep 6

13

20

27

Oct 4

11

18

25

Nov 1

8

15

22

29

Dec 6

£ s d

1 2

1 1

1 2

1 2

1 2

1 1 2

1 2

1 2

1 2

16 6

1 2

1 2

1 2

1 2

9 9

15 10 5

Brought forward

17 12 1

£ 33 2 6

1862 & 63. Jones Piece Work.

Dec 20	Two Clarinella	1	4	"
Jan 13	Stopped flute		15	
	Two octave flute		3	
	Two tenor C flutes	1	10	
	two octaves Stop Dia G. O. Felbury	1	9	
	Two octaves Stop Dia Sweet Felbury	1	9	
	Two octaves Small Moundon's Felbury	1	9	
	Stopped flute Bass 12. Felbury		10	
	Stopped flute Bass 12. Lents		10	
	Octave Pedal Moundon's Felbury		19	
	Two stop trebles	1	4	

Brought forward.

	10	13	0
	28	10	1
<u>L</u>	<u>39</u>	<u>3</u>	<u>1</u>

1862  
 Dec 20  
 24  
 63 Jan 3  
 10  
 17  
 24  
 31  
 Feb 7  
 14  
 20  
 28  
 March 7  
 14

cash on acc

9	2
11	
1	2
1	2 6
1	2
1	2
	5
	11
1	9
1	
	17 8
1	" "
1	" "
<hr/>	
11	5 1
33	2 6
<hr/>	
44	8 7
<hr/>	

Brought forward

£

41. Lawrence Sheriff St. Rugby.  
Sept. 8<sup>th</sup> 1861.

To Mr. Nicholson.

Sir, I sh<sup>d</sup>. much wish you to  
send me a design & an estimate for  
a small Organ about the size of  
the last one only let it be a C  
organ. if I can possibly keep  
them waiting till you can do it  
I will, for being near Rugby  
it would just suit you for the  
morning & I think would lead  
to another organ also. It  
will be the gift of the Rector  
I sh<sup>d</sup>. say therefore that the money  
would be paid as soon as it is

Specification and Estimate for Repairing  
the Chapel Organ

The whole of the pipes to be  
taken out cleaned, repaired,  
revoiced and tuned ————— £ 12 " "

The Great Organ Soundboard to  
be taken out, and the valves  
releathered

Swell Doors reclothed and  
refitted.

New Coupler pint. Bellows  
and bellows handle to be put  
in good repair from £8 to  
£10 extra

The whole of the work to be done  
if possible for £20, and in  
any case not to exceed £~~22~~ 22  
including all expenses

John Nicholson  
Worcester Jan<sup>r</sup> 15<sup>th</sup> 1861

S/ Thomas Baylis Esq

put up as far as I can judge.  
The design for the Organ must be  
Gothic not an expensive case  
for it is not wished to be a large  
organ or an expensive one.

Open Diapason.

Dulciana or Flute

Stop Diap.

Principal

Sixteenth ~~or~~ Reed

Bowdson pedals to be an Octave

lower than Keys - could there be  
two Octaves of Pedals <sup>of course</sup> a general  
swell. Can you do me the above

for ~~about~~ eighty pounds. Waiting  
to hear from you very soon

I am, Sir, very truly  
E. S. Lawrence

Please let me hear from you  
without delay for the gentleman is  
going out for 3 weeks & wishes  
it decided before he goes -

*Intentionally Blank*



The making of an English organ builder:  
John Nicholson of Worcester, formation life and work

**THE WIND PRESSURES LISTED IN SB2: WP**

See SB2 for bibliographic information about this list, contained in an untitled MS shop book, with content dated between 1892 to September 1918. Pages 141-3, are headed ‘Wind pressures’ (not arranged in date or alphabetical order) and these references are cited in the book as SB2: WP.

The list appears to have been transcribed from another source or sources. Many of the dated entries coincide exactly with known Nicholson (and, Nicholson and Company) work — new, rebuilt or enlargement, *e.g.* Dunstable Priory, October 1891. Some entries cannot be linked to known work and may be the result of surveys associated with unsuccessful estimates for rebuilding or, perhaps, interest on the part of a tuner or voicer in an admired instrument by another hand. Some entries precede the known date of work, perhaps as a result of a survey, prior to estimate and then rebuilding or tonal changes, *e.g.* Newbury 1884, but dated elsewhere 1885, also Hampstead Road Chapel [Birmingham] (1883), but elsewhere as 1885; although some of these entries could simply be the result of the construction and dedication bridging the turn of the year. Against many entries, the year space is filled with a dash, or left blank. Sometimes a succeeding entry agrees with the date above but, more often, it does not and it may be assumed that the date for these entries was lost (or forgotten) in transcription.

Nevertheless, the list is another aid to identify and date some contracts and suggests that  $2\frac{5}{8}$ " was a preferred choice.

Year	Wind pressure inches
— Edgbaston, St. James, Birmingham ‘Nave organ’	$2\frac{7}{8}$
1891 Dunstable Priory (29th October 1891) ‘good’	$2\frac{3}{4}$
— Barmouth, ‘Grt. to Ch. $2\frac{3}{4}$ Swell’	3
— Rugby Lower School	$2\frac{3}{4}$
— Wretham Road [ <i>sic</i> ] ‘good’	$2\frac{5}{8}$
1866 Coldwall, November	$2\frac{3}{8}$
1866 Evesham, December	—
1866 Clifton, Mr. Ward[?]	$2\frac{3}{8}$
1867 Eastnor, [February?]	$2\frac{1}{2}$
1867 Holden	$2\frac{1}{4}$ [+] $\frac{1}{16}$
1867 Loughborough	$2\frac{1}{2}$
1867 Bromyard	$2\frac{5}{8}$
1867 Shrub Hill [Holy Trinity, Worcester]	$2\frac{1}{2}$
1867 Madresfield	$2\frac{1}{2}$
1867 Little Malvern	$2\frac{3}{8}$
1867 Madresfield Court	$2\frac{1}{2}$
1862 Rochdale	$2\frac{3}{4}$
1861 Severn Stoke	$2\frac{3}{8}$
1861 Westminster	$2\frac{3}{8}$
1861 Cuddesdon Church	$2\frac{3}{8}$
— Malvern	$2\frac{1}{2}$ [and?] $3\frac{1}{2}$
1872 Norton nr. Evesham	$2\frac{1}{4}$
1872 Alloa	$2\frac{1}{2}$
1872 Kempsey ‘old organ’	$2\frac{1}{2}$
— Evesham ‘old organ’	$2\frac{1}{2}$
— Belmont, Hereford ‘good’	$2\frac{7}{8}$

1871	Birdport Chapel	$2\frac{3}{4}$ bare
1872	Worcester, St. Nicholas 'good'	$2\frac{1}{2}$
1864	Northwick	$2\frac{1}{2}$
—	Redmarley	$2\frac{3}{8}$
1864	Tenbury	$2\frac{1}{2}$
1864	Hindred [?]	$2\frac{3}{8}$
1864	Gloucester Chapel	$2\frac{1}{2}$
1864	Droitwich, St. Peter	$2\frac{1}{2}$
1864	Lowsmore	$2\frac{3}{8}$
1864	Cricklade	$2\frac{1}{2}$
1865	Bridstow	$2\frac{1}{4}$
1865	Claines 'new organ'	$2\frac{3}{8}$
1865	Worcester, St. Martin	$2\frac{1}{2}$
1865	Worcester College	$2\frac{3}{8}$
1865	Astley	$2\frac{3}{8}$
1859	Rugby, Mr. Lawrence	2
—	Ripple	$2\frac{3}{8}$
1858	Highbury Cheltenham 'good'	$2\frac{5}{8}$
1856	Cheltenham 'old'	$2\frac{1}{2}$
1856	Kebworth Hall	2
—	Kebworth Church	$2\frac{1}{4}$
1854	Hanley Church	$2\frac{3}{8}$
1854	Worcester, St. Alban	$2\frac{1}{8}$
—	Offchurch	$2\frac{5}{8}$
—	Ludlow	$2\frac{5}{8}$
—	Hatherop Castle	3
1857	Newnham	$2\frac{1}{4}$
—	Amblecote	$2\frac{1}{2}$
1856	Brishley [ <i>sic</i> ]	$2\frac{5}{8}$
1862	Worcester, Barbourne	$2\frac{3}{8}$
—	Malvern Wells	$2\frac{1}{16}$
1855	Tewkesbury Chapel	$2\frac{1}{8}$
1857	Addington	$2\frac{1}{8}$
1857	Stapleton	$2\frac{3}{8}$
1857	Tedstone [Delamere]	$2\frac{1}{8}$
—	St. Georges	$2\frac{3}{8}$
1877	Coughton, Roman Catholic	$2\frac{5}{8}$
—	Broseley	$2\frac{3}{4}$
—	Lincolnshire	2
1858	Humberston	$2\frac{1}{4}$
1858	Painswick	$2\frac{5}{8}$
1858	Bedford	$2\frac{3}{8}$
—	Bromsgrove	$2\frac{3}{8}$
1856	Whetstone	$2\frac{1}{4}$
1856	Endbury	$2\frac{1}{4}$
1857	Stapleton 'old organ'	$2\frac{1}{4}$
1857	Lord Ward	$2\frac{3}{8}$
1864	Newlands	$2\frac{3}{8}$
1864	Faringdon	$2\frac{1}{2}$
1864	Campden	$2\frac{3}{8}$
—	St. James	$2\frac{5}{8}$ [and?] 4
1864	Daylesford	$2\frac{1}{4}$
1864	Long Compton	$2\frac{3}{8}$

1864	Pershore	$2\frac{3}{8}$
1862	Pershore Abbey	$2\frac{3}{8}$
1863	Hartlebury	$2\frac{1}{2}$
1863	Ledbury	$2\frac{1}{2}$
1863	Stourport	$2\frac{3}{8}$
1873	North Malvern, Trinity	$2\frac{3}{8}$
1873	Bromsgrove Grammar School	$2\frac{1}{2}$
1874	Farringdon	$2\frac{1}{2}$
—	Birmingham, St. Agnes, Moseley	$2\frac{5}{8}$
1897	Birmingham, St. Aidan	3
1854	Leigh Church	$2\frac{5}{8}$
1890	St. Helen	$2\frac{7}{8}$
—	Harbourne [ <i>sic</i> ]	3
—	Gloucester	$3\frac{1}{8}$
—	Hadley [?] ‘old organ $2\frac{7}{8}$ ”	$2\frac{3}{4}$
—	Droitwich	$2\frac{3}{8}$
1888	Clun	$2\frac{7}{8}$
—	Redditch	$2\frac{5}{8}$ [+] $\frac{1}{16}$
—	Birmingham, Old Meeting	3
1855	Lapworth	$2\frac{1}{8}$
1855	Preston	$2\frac{1}{4}$
1855	Horist. [ <i>sic</i> ]	$2\frac{3}{8}$
1855	Tewkesbury, Trinity Church	$2\frac{3}{8}$
1855	Leicester	$2\frac{3}{8}$
—	Ledbury P.C.	3
—	Hamstead Rd.	$2\frac{3}{4}$
—	Upton Bishop	$3\frac{3}{4}$
—	Coughton	$2\frac{5}{8}$
—	Redditch Church	$2\frac{3}{8}$
1857	Westbury on Severn	$2\frac{3}{8}$
1860	Cambridge	$2\frac{3}{8}$
1860	Holt	$2\frac{1}{8}$
1860	Manchester ‘H.P. $4\frac{1}{2}$ ”	$2\frac{1}{2}$
1861	Torquay	$2\frac{3}{8}$
1861	Clent	$2\frac{1}{4}$
1861	Lemster Chapel [ <i>sic</i> ]	$2\frac{3}{8}$
1890	Birlingham	$2\frac{3}{4}$
—	Islington Chapel	$2\frac{3}{4}$
—	St. Albans	$2\frac{1}{4}$
—	Pershore Abbey	$2\frac{7}{8}$
1885	Worcester, St. John	$2\frac{5}{8}$
1885	Yorktown, St. Michael, Surrey	$2\frac{5}{8}$
1859	Donnington	2
—	Cuddesdon	2
1859	Hanley Castle	$2\frac{3}{8}$
1859	Ombersley Ch.	$2\frac{3}{4}$
1868	All Saints	$2\frac{3}{4}$
1865	Middleton Stoney [may be 1868]	$1\frac{1}{2}$
1870	Cheltenham, St. John	$2\frac{3}{4}$
1870	Upton	$2\frac{3}{4}$
—	West Malvern	$2\frac{5}{8}$
—	Martley	$2\frac{1}{2}$
187?	Colwall	$2\frac{1}{2}$

1850	Gloucester, Shire Hall	$2\frac{5}{8}$
1857	Hagley	$2\frac{1}{4}$
1864	Worcester, St. Martin	$2\frac{3}{8}$
185?	Kempsford	2
—	Dudley	$2\frac{3}{4}$
—	Tardebigg[e]	$2\frac{5}{8}$
1860	Astwood	$2\frac{3}{8}$
—	Hamstead Rd.	$2\frac{3}{4}$
1866	Spa Church, Glos	$2\frac{1}{2}$
1866	Leicester, London Road Chapel	$2\frac{1}{2}$
1866	Leicester, Old Chapel	$2\frac{1}{2}$
1865	Worcester, Baptist Chapel	$2\frac{1}{2}$
—	Coughton Church	$2\frac{3}{8}$
1865	Worcester, St. John	$2\frac{1}{2}$
1865	St. Johns 'old organ'	$2\frac{3}{4}$
1865	Dumbleton	$2\frac{3}{8}$
—	Worcester, Angel Street	$2\frac{3}{8}$
1866	'St. John's old organ moved 1/2/1866'	$2\frac{1}{2}$
1886	Asylum	$2\frac{5}{8}$ [+] $\frac{1}{16}$
1884	Cleobury Mortimer	$2\frac{5}{8}$
—	Oldswinford	$2\frac{5}{8}$
—	Newbury	$2\frac{5}{8}$ [+] $\frac{1}{16}$
—	Twyning	$2\frac{5}{8}$ [+] $\frac{1}{16}$
1886	Prestbury, Cheltenham	3
1886	Church Lench	$2\frac{5}{8}$
1886	Bidford	$2\frac{5}{8}$ [+] $\frac{1}{16}$
1886	Luton	$2\frac{5}{8}$ [+] $\frac{1}{16}$
1875	Torquay	$2\frac{5}{8}$
1875	Tugby, Leics	$2\frac{1}{2}$
—	Evesham, Oat Street	$2\frac{1}{2}$
—	Lady Cowpers	$2\frac{5}{8}$
—	Cheltenham, Christ Church	$2\frac{5}{8}$
—	Launceston, Wesleyan Church	$2\frac{5}{8}$
—	Kemerton	$2\frac{3}{8}$
1875	Redmarley	$2\frac{3}{8}$
1876	Alveston	$3\frac{1}{4}$
—	Worcester, St. Michael	$2\frac{1}{3}$
—	Hereford, St. James	$2\frac{7}{8}$
—	Wellingborough	$2\frac{3}{4}$
1878	Brasted	$2\frac{3}{4}$
—	Gurnsey	$2\frac{5}{8}$
1866	Bromyard	$2\frac{3}{4}$
1866	Stourport	$2\frac{1}{2}$
1876	Eldersfield	$2\frac{5}{8}$
1879	Tardibigg[e]	$2\frac{5}{8}$
—	Ripple	$2\frac{3}{8}$
1879	Bridgnorth	$2\frac{5}{8}$
—	Redditch	$2\frac{1}{2}$
1881	Malvern College	$2\frac{5}{8}$
1882	Heckfield	$2\frac{5}{8}$
1883	Great Barrington	$2\frac{5}{8}$
1883	Clunbury	$2\frac{5}{8}$
1883	Church Stretton	$2\frac{5}{8}$

1883	Park Road	$2\frac{5}{8}$
1883	Park Road	$2\frac{5}{8}$
1883	Birmingham, Hampstead Road Chapel	$2\frac{5}{8}$
1884	Brailes Church	$2\frac{5}{8}$
1883	Ludlow, St. John	$2\frac{5}{8}$
1884	Amestry, Kingsland	$1\frac{7}{8}$
1909	London, Wandsworth Common Sw $3\frac{1}{2}$ , Gt. Ch.	3
1907	Rushden	3

SB2: WP, DATE ORDER:

—	? off bottom of page 2, second column	
—	Amblecote	$2\frac{1}{2}$
—	Barmouth, 'Grt. to Ch. $2\frac{3}{4}$ Swell'	3
—	Belmont. Hereford 'good'	$2\frac{7}{8}$
—	Birmingham, Old Meeting	3
—	Birmingham, St. Agnes, Moseley	$2\frac{5}{8}$
—	Bromsgrove	$2\frac{3}{8}$
—	Broseley	$2\frac{3}{4}$
—	Cheltenham, Christ Church	$2\frac{5}{8}$
—	Coughton Church	$2\frac{3}{8}$
—	Coughton	$2\frac{5}{8}$
—	Cuddeston	2
—	Droitwich	$2\frac{3}{8}$
—	Dudley	$2\frac{3}{4}$
—	Edgbaston, St. James, Birmingham 'Nave organ'	$2\frac{7}{8}$
—	Evesham, Oat Street	$2\frac{1}{2}$
—	Evesham 'old organ'	$2\frac{1}{2}$
—	Gloucester	$3\frac{1}{8}$
—	Gurnsey	$2\frac{5}{8}$
—	Hadley [?] 'old organ $2\frac{7}{8}$ '	$2\frac{3}{4}$
—	Hamstead Rd.	$2\frac{3}{4}$
—	Harborne	3
—	Hatherop Castle [ <i>sic</i> ]	3
—	Hereford, St. James	$2\frac{7}{8}$
—	Islington Chapel	$2\frac{3}{4}$
—	Kebworth Church	$2\frac{1}{4}$
—	Kemerton	$2\frac{3}{8}$
—	Lady Cowpers	$2\frac{5}{8}$
—	Launceston, Wesleyan Church	$2\frac{5}{8}$
—	Ledbury P.C.	3
—	Lincolnshire [ <i>sic</i> ]	2
—	Ludlow	$2\frac{5}{8}$
—	Malvern	$2\frac{1}{2}$ [and?] $3\frac{1}{2}$
—	Malvern Wells	$2\frac{1}{16}$
—	Martley	$2\frac{1}{2}$
—	Newbury	$2\frac{5}{8}$ [+] $\frac{1}{16}$
—	Offchurch	$2\frac{5}{8}$
—	Oldswinford	$2\frac{5}{8}$
—	Pershore Abbey	$2\frac{7}{8}$
—	Redditch	$2\frac{1}{2}$
—	Redditch	$2\frac{5}{8}$ [+] $\frac{1}{16}$
—	Redditch Church	$2\frac{3}{8}$

—	Redmarley	$2\frac{3}{8}$
—	Ripple	$2\frac{3}{8}$
—	Ripple	$2\frac{3}{8}$
—	Rugby Lower School	$2\frac{3}{4}$
—	St. Albans	$2\frac{1}{4}$
—	St. Georges	$2\frac{3}{8}$
—	St. James	$2\frac{5}{8}$ [and?] 4
—	Tardebigge	$2\frac{5}{8}$
—	Twyning	$2\frac{5}{8}$ [+] <sup>1/16</sup>
—	Upton Bishop	$3\frac{3}{4}$
—	Wellingborough	$2\frac{3}{4}$
—	West Malvern	$2\frac{5}{8}$
—	Worcester, Angel Street	$2\frac{3}{8}$
—	Worcester, St. Michael	$2\frac{1}{3}$
—	Wretham Road [ <i>sic</i> ] ‘good’	$2\frac{5}{8}$
1850	Gloucester, Shire Hall	$2\frac{5}{8}$
1854	Hanley Church	$2\frac{3}{8}$
1854	Leigh Church	$2\frac{5}{8}$
1854	Worcester, St. Alban	$2\frac{1}{8}$
1855	Horist. [ <i>sic</i> ]	$2\frac{3}{8}$
1855	Lapworth	$2\frac{1}{8}$
1855	Leicester	$2\frac{3}{8}$
1855	Preston	$2\frac{1}{4}$
1855	Tewkesbury Chapel	$2\frac{1}{8}$
1855	Tewkesbury, Trinity Church	$2\frac{3}{8}$
1856	Brishley [ <i>sic</i> ]	$2\frac{5}{8}$
1856	Cheltenham ‘old’	$2\frac{1}{2}$
1856	Endbury	$2\frac{1}{4}$
1856	Kebworth Hall	2
1856	Whetstone	$2\frac{1}{4}$
1857	Addington	$2\frac{1}{8}$
1857	Hagley	$2\frac{1}{4}$
1857	Lord Ward	$2\frac{3}{8}$
1857	Newnham	$2\frac{1}{4}$
1857	Stapleton ‘old organ’	$2\frac{1}{4}$
1857	Stapleton	$2\frac{3}{8}$
1857	Tedstone [?]	$2\frac{1}{8}$
1857	Westbury on Severn	$2\frac{3}{8}$
1858	Painswick	$2\frac{5}{8}$
1858	Bedford	$2\frac{3}{8}$
1858	Highbury Cheltenham ‘good’	$2\frac{5}{8}$
1858	Humberston	$2\frac{1}{4}$
1859	Donnington	2
1859	Hanley Castle	$2\frac{3}{8}$
1859	Omersley Ch.	$2\frac{3}{4}$
1859	Rugby, Mr. Lawrence	2
185?	Kempsford	2
1860	Astwood	$2\frac{3}{8}$
1860	Cambridge	$2\frac{3}{8}$
1860	Holt	$2\frac{1}{8}$
1860	Manchester ‘H.P. 4½”	$2\frac{1}{2}$
1861	Clent	$2\frac{1}{4}$
1861	Cuddesdon Church	$2\frac{3}{8}$

1861	Lemster Chapel [ <i>sic</i> ]	$2\frac{3}{8}$
1861	Severn Stoke	$2\frac{3}{8}$
1861	Torquay	$2\frac{3}{8}$
1861	Westminster	$2\frac{3}{8}$
1862	Pershore Abbey	$2\frac{3}{8}$
1862	Rochdale	$2\frac{3}{4}$
1862	Worcester, Barbourne	$2\frac{3}{8}$
1863	Hartlebury	$2\frac{1}{2}$
1863	Ledbury	$2\frac{1}{2}$
1863	Stourport	$2\frac{3}{8}$
1864	Campden	$2\frac{3}{8}$
1864	Cricklade	$2\frac{1}{2}$
1864	Daylesford	$2\frac{1}{4}$
1864	Droitwich, St. Peter	$2\frac{1}{2}$
1864	Faringdon	$2\frac{1}{2}$
1864	Gloucester Chapel	$2\frac{1}{2}$
1864	Hindred [?]	$2\frac{3}{8}$
1864	Long Compton	$2\frac{3}{8}$
1864	Lowmore	$2\frac{3}{8}$
1864	Newlands	$2\frac{3}{8}$
1864	Northwick	$2\frac{1}{2}$
1864	Pershore	$2\frac{3}{8}$
1864	Tenbury	$2\frac{1}{2}$
1864	Worcester, St. Martin	$2\frac{3}{8}$
1865	Astley	$2\frac{3}{8}$
1865	Bridstow	$2\frac{1}{4}$
1865	Claines 'new organ'	$2\frac{3}{8}$
1865	Dumbleton	$2\frac{3}{8}$
1865	Middleton Stoney [may be 1868]	$1\frac{1}{2}$
1865	St. Johns 'old organ'	$2\frac{3}{4}$
1865	Worcester College	$2\frac{3}{8}$
1865	Worcester, Baptist Chapel	$2\frac{1}{2}$
1865	Worcester, St. John	$2\frac{1}{2}$
1865	Worcester, St. Martin	$2\frac{1}{2}$
1866	'St. John's old organ moved 1/2/1866'	$2\frac{1}{2}$
1866	Bromyard	$2\frac{3}{4}$
1866	Clifton, Mr. Ward[?]	$2\frac{3}{8}$
1866	Coldwall, November	$2\frac{3}{8}$
1866	Evesham, December	$2\frac{5}{8}$
1866	Leicester, London Road Chapel	$2\frac{1}{2}$
1866	Leicester, Old Chapel	$2\frac{1}{2}$
1866	Spa Church, Glos	$2\frac{1}{2}$
1866	Stourport	$2\frac{1}{2}$
1867	Holden	$2\frac{1}{4}$ [+] $\frac{1}{16}$
1867	Bromyard	$2\frac{5}{8}$
1867	Eastnor, [month indecipherable]	$2\frac{1}{2}$
1867	Little Malvern	$2\frac{3}{8}$
1867	Loughborough	$2\frac{1}{2}$
1867	Madresfield Court	$2\frac{1}{2}$
1867	Madresfield	$2\frac{1}{2}$
1867	Shrub Hill [Holy Trinity, Worcester]	$2\frac{1}{2}$
1868	All Saints	$2\frac{3}{4}$
1870	Cheltenham, St. John	$2\frac{3}{4}$

1870	Upton	$2\frac{3}{4}$
1871	Birdport Chapel	$2\frac{3}{4}$ bare
1872	Alloa	$2\frac{1}{2}$
1872	Kempsey 'old organ'	$2\frac{1}{2}$
1872	Norton nr. Evesham	$2\frac{1}{4}$
1872	Worcester, St. Nicholas 'good'	$2\frac{1}{2}$
1873	Bromsgrove Grammar School	$2\frac{1}{2}$
1873	North Malvern, Trinity	$2\frac{3}{8}$
1874	Farringdon	$2\frac{1}{2}$
1875	Redmarley	$2\frac{3}{8}$
1875	Torquay	$2\frac{5}{8}$
1875	Tugby, Leics	$2\frac{1}{2}$
1876	Alveston	$3\frac{1}{4}$
1876	Eldersfield	$2\frac{5}{8}$
1877	Coughton, Roman Catholic	$2\frac{5}{8}$
1878	Brasted	$2\frac{3}{4}$
1879	Bridgnorth	$2\frac{5}{8}$
1879	Tardibigg[e]	$2\frac{5}{8}$
187?	Colwall	$2\frac{1}{2}$
1881	Malvern College	$2\frac{5}{8}$
1882	Heckfield	$2\frac{5}{8}$
1883	Birmingham, Hampstead Road Chapel	$2\frac{5}{8}$
1883	Church Stretton	$2\frac{5}{8}$
1883	Clunbury	$2\frac{5}{8}$
1883	Great Barrington	$2\frac{5}{8}$
1883	Ludlow, St. John	$2\frac{5}{8}$
1883	Park Road	$2\frac{5}{8}$
1883	Park Road	$2\frac{5}{8}$
1884	Amestry, Kingsland	$1\frac{7}{8}$
1884	Brailes Church	$2\frac{5}{8}$
1884	Cleobury Mortimer	$2\frac{5}{8}$
1885	Yorktown, St. Michael, Surrey	$2\frac{5}{8}$
1885	Worcester, St. John	$2\frac{5}{8}$
1886	Asylum	$2\frac{5}{8}$ [+] $\frac{1}{16}$
1886	Bidford	$2\frac{5}{8}$ [+] $\frac{1}{16}$
1886	Church Lench	$2\frac{5}{8}$
1886	Luton	$2\frac{5}{8}$ [+] $\frac{1}{16}$
1886	Prestbury, Cheltenham	3
1888	Clun	$2\frac{7}{8}$
1890	Birlingham	$2\frac{3}{4}$
1890	St. Helen	$2\frac{7}{8}$
1891	Dunstable Priory (29th October 1891) 'good'	$2\frac{3}{4}$
1897	Birmingham, St. Aidan	3
1907	Rushden	3
1909	London, Wandsworth Common Sw $3\frac{1}{2}$ , Gt. Ch.	3

*Edited transcription © Jim Berrow, March 1995.  
Not to be used without acknowledgement.*